

APC/Fire™ 750 anti-human β2-microglobulin Antibody

Catalog# / Size	395709 / 25 tests 395710 / 100 tests
Clone	A17082A
Regulatory Status	RUO
Other Names	β2M, β2-M, beta2-microglobulin b2-M, b2M
Isotype	Mouse IgG1, κ
Description	β2-microglobulin (β2M) is a 12 kD nonpolymorphic Ig like protein. It is a non-membrane-anchored glycoprotein and is noncovalently associated with 39-44 kD polymorphic heavy chains of MHC class I molecules to form HLA class I antigen complex. In association with HLA class I, β2M is expressed on all leukocytes, platelets, endothelial cells, and epithelial cells. β2M plays an essential role both in governing MHC class I molecules stability and in promoting antigen binding and presenting the antigen to CD3/TCR complex of CD8 ⁺ T cells.

Product Details

Verified Reactivity	Human
Antibody Type	Monoclonal
Host Species	Mouse
Immunogen	Recombinant human Beta2-microglobulin
Formulation	Phosphate-buffered solution, pH 7.2, containing 0.09% sodium azide and BSA (origin USA)
Preparation	The antibody was purified by affinity chromatography and conjugated with APC/Fire™ 750 under optimal conditions.
Storage & Handling	The antibody solution should be stored undiluted between 2°C and 8°C, and protected from prolonged exposure to light. Do not freeze.
Application	FC - Quality tested
Recommended Usage	Each lot of this antibody is quality control tested by immunofluorescent staining with flow cytometric analysis . For flow cytometric staining, the suggested use of this reagent is 5 μl per million cells in 100 μl staining volume or 5 μl per 100 μl of whole blood. * APC/Fire™ 750 has a maximum excitation of 650 nm and a maximum emission of 787 nm.
Application Notes	Clone A17082A partially cross-blocks anti-human β2-microglobulin clone 2M2 and does not block anti-human HLA-A,B,C clone W6/32 staining, based on in-house testing.
RRID	AB_2801058 (BioLegend Cat. No. 395709) AB_2801059 (BioLegend Cat. No. 395710)

Antigen Details

Structure	12 KD, Ig like structure
Distribution	Leukocytes, platelets, endothelial cells, epithelial cells and other nucleated cells.
Function	Form MHC class I
Interaction	MHC class I heavy chain and other MHC I like molecules.
Cell Type	Antigen-presenting cells, Endothelial cells, Epithelial cells, Leukocytes, Platelets
Biology Area	Cancer Biomarkers, Immunology, Innate Immunity

Molecular Family MHC Antigens

Antigen References

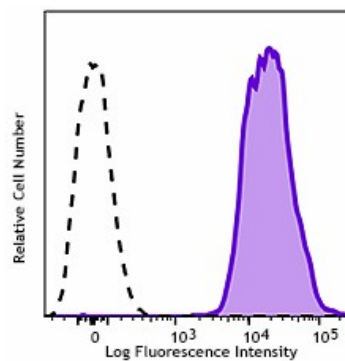
1. Engelhard VH. 1994. *Curr. Opin. Immunol.* 6:13.
2. Williams DB, et al. 1989. *J. Immunol.* 142:2796.
3. Danliczyk UG and TL. Delovitch. 1994. *J. Immunol.* 153:3533.
4. Williams A, et al. 2002. *Tissue Antigens.* 59:3.

Gene ID [567](#)

Other Formats

Purified anti-human β 2-microglobulin, FITC anti-human β 2-microglobulin, Alexa Fluor® 700 anti-human β 2-microglobulin, APC/Fire™ 750 anti-human β 2-microglobulin, PE anti-human β 2-microglobulin, APC anti-human β 2-microglobulin, PE/Cyanine7 anti-human β 2-microglobulin, PerCP/Cyanine5.5 anti-human β 2-microglobulin, APC/Cyanine7 anti-human β 2-microglobulin

Product Data



Human peripheral blood lymphocytes were stained with anti-human β 2-microglobulin (clone A17082A) APC/Fire™ 750 (Filled Histogram) or Mouse IgG1, κ APC/Fire™ 750 Isotype Control (open histogram).

For research use only. Not for diagnostic use. Not for resale. BioLegend will not be held responsible for patent infringement or other violations that may occur with the use of our products.

*These products may be covered by one or more Limited Use Label Licenses (see the BioLegend Catalog or our website, www.biolegend.com/ordering#license). BioLegend products may not be transferred to third parties, resold, modified for resale, or used to manufacture commercial products, reverse engineer functionally similar materials, or to provide a service to third parties without written approval of BioLegend. By use of these products you accept the terms and conditions of all applicable Limited Use Label Licenses. Unless otherwise indicated, these products are for research use only and are not intended for human or animal diagnostic, therapeutic or commercial use.

BioLegend Inc., 8999 BioLegend Way, San Diego, CA 92121 www.biolegend.com
Toll-Free Phone: 1-877-Bio-Legend (246-5343) Phone: (858) 768-5800 Fax: (877) 455-9587