

Pacific Blue™ anti-human CD161 Antibody

Catalog# / Size	339925 / 25 tests 339926 / 100 tests
Clone	HP-3G10
Regulatory Status	RUO
Other Names	NKR-P1A
Isotype	Mouse IgG1, κ

Description CD161 is a type II transmembrane glycoprotein, also known as NKR-P1A, that is expressed as a 40-44 kD homodimer. It is a member of the C-type lectin superfamily. CD161 is expressed on a majority of NK cells, NKT cells, and subsets of peripheral T cells and CD3⁺ thymocytes. It has been reported that Th17 cells are a subpopulation of CD4⁺CD161⁺CCR6⁺ cells. While the biological function of CD161 is not clear, it has been suggested to serve either as a stimulatory receptor or to inhibit NK cell-mediated cytotoxicity and cytokine production. LLT-1 (lectin-like transcript-1, also named as osteoclast inhibitory lectin or CLEC2D) is the ligand of CD161.

Product Details

Reactivity	Human, African Green, Baboon, Cynomolgus, Rhesus
Antibody Type	Monoclonal
Host Species	Mouse
Immunogen	Human NK cells
Formulation	Phosphate-buffered solution, pH 7.2, containing 0.09% sodium azide and 0.2% (w/v) BSA (origin USA).
Preparation	The antibody was purified by affinity chromatography and conjugated with Pacific Blue™ under optimal conditions.
Concentration	Lot-specific (to obtain lot-specific concentration, please enter the lot number in our Concentration and Expiration Lookup or Certificate of Analysis online tools.)
Storage & Handling	The antibody solution should be stored undiluted between 2°C and 8°C, and protected from prolonged exposure to light. Do not freeze.
Application	FC - Quality tested
Recommended Usage	Each lot of this antibody is quality control tested by immunofluorescent staining with flow cytometric analysis . For flow cytometric staining, the suggested use of this reagent is 5 µl per million cells in 100 µl staining volume or 5 µl per 100 µl of whole blood. * Pacific Blue™ has a maximum emission of 455 nm when it is excited at 405 nm. Prior to using Pacific Blue™ conjugate for flow cytometric analysis, please verify your flow cytometer's capability of exciting and detecting the fluorochrome. Alexa Fluor® and Pacific Blue™ are trademarks of Life Technologies Corporation. View full statement regarding label licenses
Excitation Laser	Violet Laser (405 nm)
Application Notes	Additional reported applications (for the relevant formats) include: inhibition of cytokine production and Western blotting under nonreducing conditions.
Application References	1. Gumß M, et al. 2004. <i>Blood</i> 104:3664. 2. Exley M, et al. 1998. <i>J. Exp. Med.</i> 188:867. 3. Marquez C, et al. 1998. <i>Blood</i> 91:2760.
(PubMed link indicates BioLegend citation)	
Product Citations	

1. Mogilenko DA, *et al.* 2020. *Immunity*. 54(1):99-115.e12. [PubMed](#)

RRID AB_2563959 (BioLegend Cat. No. 339925)
AB_2563960 (BioLegend Cat. No. 339926)

Antigen Details

Structure	Type II glycoprotein, 40-44 kD homodimer, C-type lectin superfamily
Distribution	NK cells, T subset, subset of CD3 ⁺ thymocytes
Ligand/Receptor	LLT-1 (Lectin-like transcript-1)
Cell Type	NK cells, T cells, Thymocytes
Biology Area	Cell Biology, Immunology, Innate Immunity, Signal Transduction
Molecular Family	CD Molecules
Antigen References	1. Takahashi T, <i>et al.</i> 2006. <i>J. Immunol.</i> 176:211. 2. Cosmi L, <i>et al.</i> 2008. <i>J. Exp. Med.</i> 205:1903. 3. Aldemir H, <i>et al.</i> 2005. <i>J. Immunol.</i> 175:7791. 4. Rosen DB, <i>et al.</i> 2008. <i>J. Immunol.</i> 180:6508.
Gene ID	3820

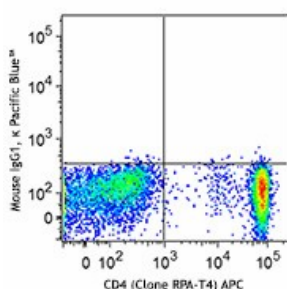
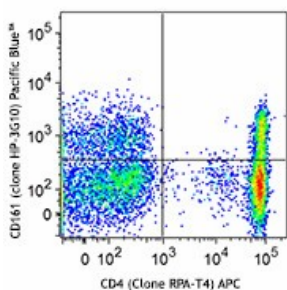
Related Protocols

[Cell Surface Flow Cytometry Staining Protocol](#)

Other Formats

Brilliant Violet 510™ anti-human CD161, FITC anti-human CD161, Purified anti-human CD161, PE anti-human CD161, PerCP/Cyanine5.5 anti-human CD161, Alexa Fluor® 647 anti-human CD161, APC anti-human CD161, Brilliant Violet 421™ anti-human CD161, Brilliant Violet 605™ anti-human CD161, PE/Cyanine7 anti-human CD161, Alexa Fluor® 700 anti-human CD161, Purified anti-human CD161 (Maxpar® Ready), Alexa Fluor® 488 anti-human CD161, Pacific Blue™ anti-human CD161, APC/Cyanine7 anti-human CD161, Brilliant Violet 785™ anti-human CD161, Biotin anti-human CD161, PerCP anti-human CD161, PE/Dazzle™ 594 anti-human CD161, APC/Fire™ 750 anti-human CD161, TotalSeq™-A0149 anti-human CD161, TotalSeq™-C0149 anti-human CD161, TotalSeq™-B0149 anti-human CD161, PE/Cyanine5 anti-human CD161 Antibody, TotalSeq™-D0149 anti-human CD161

Product Data



Human peripheral blood lymphocytes were stained with CD4 APC and CD161 (clone HP-3G10) Pacific Blue™ (top) or mouse IgG1, κ Pacific Blue™ isotype control (bottom).

For research use only. Not for diagnostic use. Not for resale. BioLegend will not be held responsible for patent infringement or other violations that may occur with the use of our products.

*These products may be covered by one or more Limited Use Label Licenses (see the BioLegend Catalog or our website, www.biolegend.com/ordering#license). BioLegend products may not be transferred to third parties, resold, modified for resale, or used to manufacture commercial products, reverse engineer functionally similar materials, or to provide a service to third parties without written approval of BioLegend. By use of these products you accept the terms and conditions of all applicable Limited Use Label Licenses. Unless otherwise indicated, these products are for research use only and are not intended for human or animal diagnostic, therapeutic or commercial use.

BioLegend Inc., 8999 BioLegend Way, San Diego, CA 92121 www.biolegend.com
Toll-Free Phone: 1-877-Bio-Legend (246-5343) Phone: (858) 768-5800 Fax: (877) 455-9587