

Biotin anti-human CD226 (DNAM-1) Antibody

| | |
|--------------------------|------------------------------------------------------------------------------------------------------------------------------------------------------------------------------------------------------------------------------------------------------------------------------------------------------------------------------------------------------------------------------------------------------------------------------------------------------------------------------------------------------------------------------------------------------------------------|
| Catalog# / Size | 338326 / 100 µg |
| Clone | 11A8 |
| Regulatory Status | RUO |
| Other Names | DNAM-1, PTA1, TLI5A1 |
| Isotype | Mouse IgG1, κ |
| Description | DNAM-1 (CD226) is a ~65 kD glycoprotein expressed on cell surface of T cells, NK cells, monocytes/macrophages, platelets and megakaryocytes and a subset of B cells and a member of the immunoglobulin (Ig)-superfamily containing 2 Ig-like domains of the V-set. The ligands for CD226 are the poliovirus receptor (CD155) and its family member nectin-2 (CD112), which are broadly expressed on epithelial, endothelial and neuronal cells. CD226 is physically associated with LFA-1 in NK cells and activated T cells, and involved in LFA-1-mediated signaling. |

Product Details

| | |
|---------------------------------------------------|-------------------------------------------------------------------------------------------------------------------------------------------------------------------------------------------------------------------------------------------------------------------------------------------------------------------------------------------------|
| Reactivity | Human, African Green, Baboon, Cynomolgus, Rhesus |
| Antibody Type | Monoclonal |
| Host Species | Mouse |
| Formulation | Phosphate-buffered solution, pH 7.2, containing 0.09% sodium azide. |
| Preparation | The antibody was purified by affinity chromatography and conjugated with biotin under optimal conditions. |
| Concentration | 0.5 mg/ml |
| Storage & Handling | The antibody solution should be stored undiluted between 2°C and 8°C. Do not freeze. |
| Application | FC - Quality tested |
| Recommended Usage | Each lot of this antibody is quality control tested by immunofluorescent staining with flow cytometric analysis . For flow cytometric staining, the suggested use of this reagent is ≤ 0.25 µg per million cells in 100 µl volume. It is recommended that the reagent be titrated for optimal performance for each application. |
| Application Notes | Additional reported applications include: block NK cell-mediated lysis. |
| Application References | 1. Fuchs A, <i>et al.</i> 2004. <i>J. Immunol.</i> 172:3994. |
| (PubMed link indicates BioLegend citation) | |
| RRID | AB_2721495 (BioLegend Cat. No. 338326) |

Antigen Details

| | |
|---------------------|---------------------------------------------------------------------------------------------------------------------------------------------------------------|
| Structure | Ig domain containing adhesion molecule |
| Distribution | Peripheral blood T cells, NK cells, monocytes/macrophages, platelets and megakaryocytes and a subset of B cells |
| Function | Receptor involved in intercellular adhesion, lymphocyte signaling, cytotoxicity and lymphokine secretion mediated by cytotoxic T-lymphocyte (CTL) and NK cell |
| Interaction | Interacts with LFA-1. |

| | |
|---------------------------|--------------------------------------------------------------------------------------------------------------------------------------------------------------------------------------------------------------------------------------------------------------|
| Ligand/Receptor | PVR (CD155) and Nectin-2 (CD112) |
| Cell Type | B cells, Macrophages, Megakaryocytes, Monocytes, NK cells, Platelets, T cells |
| Biology Area | Immunology |
| Molecular Family | CD Molecules |
| Antigen References | <ol style="list-style-type: none"> 1. Shibuya A <i>et al.</i> 1996. <i>Immunity</i> 4:573. 2. Tahara-Hanaoka S <i>et al.</i> 2004. <i>Int. Immunol.</i> 16:533. 3. Pende D <i>et al.</i> 2005. <i>Mol. Immunol.</i> 42:463. |
| Gene ID | 10666 |

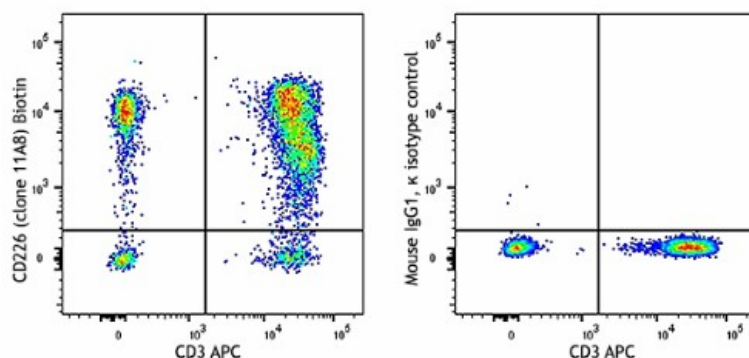
Related Protocols

[Cell Surface Flow Cytometry Staining Protocol](#)

Other Formats

Purified anti-human CD226 (DNAM-1), FITC anti-human CD226 (DNAM-1), PE anti-human CD226 (DNAM-1), APC anti-human CD226 (DNAM-1), PerCP/Cyanine5.5 anti-human CD226 (DNAM-1), PE/Cyanine7 anti-human CD226 (DNAM-1), APC/Fire™ 750 anti-human CD226 (DNAM-1), Brilliant Violet 785™ anti-human CD226 (DNAM-1), Brilliant Violet 605™ anti-human CD226 (DNAM-1), PE/Dazzle™ 594 anti-human CD226 (DNAM-1), Biotin anti-human CD226 (DNAM-1), Brilliant Violet 510™ anti-human CD226 (DNAM-1), Alexa Fluor® 647 anti-human CD226 (DNAM-1), Brilliant Violet 421™ anti-human CD226 (DNAM-1), Brilliant Violet 711™ anti-human CD226 (DNAM-1), TotalSeq™-A0368 anti-human CD226 (DNAM-1), TotalSeq™-C0368 anti-human CD226 (DNAM-1), TotalSeq™-B0368 anti-human CD226 (DNAM-1), TotalSeq™-D0368 anti-human CD226 (DNAM-1)

Product Data



Human peripheral blood lymphocytes were stained with CD3 APC and biotinylated CD226 (clone 11A8, left) or biotinylated mouse IgG1, κ isotype control (right), followed by Sav-PE.

For research use only. Not for diagnostic use. Not for resale. BioLegend will not be held responsible for patent infringement or other violations that may occur with the use of our products.

*These products may be covered by one or more Limited Use Label Licenses (see the BioLegend Catalog or our website, www.biolegend.com/ordering#license). BioLegend products may not be transferred to third parties, resold, modified for resale, or used to manufacture commercial products, reverse engineer functionally similar materials, or to provide a service to third parties without written approval of BioLegend. By use of these products you accept the terms and conditions of all applicable Limited Use Label Licenses. Unless otherwise indicated, these products are for research use only and are not intended for human or animal diagnostic, therapeutic or commercial use.

BioLegend Inc., 8999 BioLegend Way, San Diego, CA 92121 www.biolegend.com
Toll-Free Phone: 1-877-Bio-Legend (246-5343) Phone: (858) 768-5800 Fax: (877) 455-9587