

PerCP/Cyanine5.5 anti-mouse/human Ki-67 Antibody

Catalog# / Size	151221 / 25 µg 151222 / 100 µg
Clone	11F6
Regulatory Status	RUO
Other Names	Mki67, Ki67, Ki-67, MIB-1, KIA
Isotype	Rat IgG2b, κ
Description	The nuclear protein Ki-67 was first identified by the monoclonal antibody Ki-67, which was generated by immunizing mice with nuclei of the L428 Hodgkin lymphoma cell line. Ki-67 protein plays an essential role in ribosomal RNA transcription and cell proliferation. Expression of Ki-67 occurs during G1, S, G2, and M phase. While in G0 phase, the Ki-67 protein is not detectable. Ki-67 is strongly expressed in proliferating cells and has been reported as a prognostic marker in various tumors.

Product Details

Verified Reactivity	Mouse, Human
Antibody Type	Monoclonal
Host Species	Rat
Immunogen	<i>E. coli</i> expressed, N-terminal His-Thioredoxin-tagged, partial mKi-67 (1816-2163 aa) recombinant protein.
Formulation	Phosphate-buffered solution, pH 7.2, containing 0.09% sodium azide
Preparation	The antibody was purified by affinity chromatography and conjugated with PerCP/Cyanine5.5 under optimal conditions.
Concentration	0.2 mg/mL
Storage & Handling	The antibody solution should be stored undiluted between 2°C and 8°C, and protected from prolonged exposure to light. Do not freeze.
Application	ICFC - Quality tested
Recommended Usage	Each lot of this antibody is quality control tested by intracellular immunofluorescent staining with flow cytometric analysis . For flow cytometric staining, the suggested use of this reagent is ≤ 0.125 µg per million cells in 100 µL volume. It is recommended that the reagent be titrated for optimal performance for each application. * PerCP/Cyanine5.5 has a maximum absorption of 482 nm and a maximum emission of 690 nm.
Excitation Laser	Blue Laser (488 nm)
RRID	AB_2910307 (BioLegend Cat. No. 151221) AB_2910307 (BioLegend Cat. No. 151222)

Antigen Details

Structure	325 kD protein containing a forkhead-associated (FHA) domain and 13 tandem repeats.
Distribution	Nucleus and chromosomes.
Function	Required for cell cycle progression and proliferation.
Biology Area	Cell Biology, Cell Cycle/DNA Replication

Antigen References

1. Starborg M, *et al.* 1996. *J. Cell. Sci.* 109:143.
2. Byeon IJ, *et al.* 2005. *Nat. Struct. Mol. Biol.* 12:987.
3. Yerushalmi R, *et al.* 2010. *Lancet. Oncol.* 11:174.
4. Beltrami AP, *et al.* 2001. *N. Engl. J. Med.* 344:1750.
5. Sachsenberg N, *et al.* 1998. *J. Exp. Med.* 187:1295.
6. Nagy Z, *et al.* 1997. *Acta. Neuropathol.* 93:294.

Gene ID

[4288](#)

[17345](#)

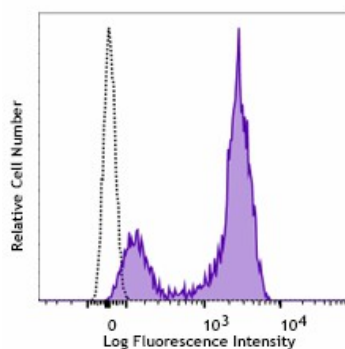
Related Protocols

[Intracellular Flow Cytometry Staining Protocol](#)

Other Formats

Purified anti-mouse/human Ki-67, Alexa Fluor® 488 anti-mouse/human Ki-67, Alexa Fluor® 647 anti-mouse/human Ki-67, Brilliant Violet 421™ anti-mouse/human Ki-67, PE anti-mouse/human Ki-67, Alexa Fluor® 594 anti-mouse/human Ki-67, FITC anti-mouse/human Ki-67, Brilliant Violet 650™ anti-mouse/human Ki-67, PE/Cyanine7 anti-mouse/human Ki-67, PE/Dazzle™ 594 anti-mouse/human Ki-67, PerCP/Cyanine5.5 anti-mouse/human Ki-67, Pacific Blue™ anti-mouse/human Ki-67

Product Data



C57BL/6J splenocytes treated with ConA and IL-2 for 3 days were fixed, permeabilized with 70% ethanol, and stained with anti-mouse/human Ki-67 (clone 11F6) PerCP/Cyanine5.5 (filled histogram) or rat IgG2b, κ PerCP/Cyanine5.5 isotype control (open histogram).

For research use only. Not for diagnostic use. Not for resale. BioLegend will not be held responsible for patent infringement or other violations that may occur with the use of our products.

*These products may be covered by one or more Limited Use Label Licenses (see the BioLegend Catalog or our website, www.biolegend.com/ordering#license). BioLegend products may not be transferred to third parties, resold, modified for resale, or used to manufacture commercial products, reverse engineer functionally similar materials, or to provide a service to third parties without written approval of BioLegend. By use of these products you accept the terms and conditions of all applicable Limited Use Label Licenses. Unless otherwise indicated, these products are for research use only and are not intended for human or animal diagnostic, therapeutic or commercial use.

BioLegend Inc., 8999 BioLegend Way, San Diego, CA 92121 www.biolegend.com
Toll-Free Phone: 1-877-Bio-Legend (246-5343) Phone: (858) 768-5800 Fax: (877) 455-9587