

Biotin anti-human CD235ab Antibody

Catalog# / Size	306617 / 25 µg 306618 / 100 µg
Clone	HIR2
Regulatory Status	RUO
Workshop	VII 70299
Other Names	Glycophorin A/B, GPA/GPB
Isotype	Mouse IgG2b, κ
Description	The HIR2 antibody reacts with a common epitope of glycophorin A (CD235a) and glycophorin B (CD235b). Glycophorin A is the major sialoglycoprotein expressed on red blood cell membrane, and erythroid precursors. Glycophorin A shares strong homology with glycophorin B. The HIR2 antibody recognizes human RBCs and erythroid precursors and is useful in erythroid cell development studies. Mature, non-nucleated red blood cells are characteristically glycophorin A positive, but CD45 and CD71 negative.

Product Details

Verified Reactivity	Human, African Green, Baboon
Antibody Type	Monoclonal
Host Species	Mouse
Formulation	Phosphate-buffered solution, pH 7.2, containing 0.09% sodium azide.
Preparation	The antibody was purified by affinity chromatography and conjugated with biotin under optimal conditions.
Concentration	0.5 mg/ml
Storage & Handling	The antibody solution should be stored undiluted between 2°C and 8°C. Do not freeze.
Application	FC - Quality tested
Recommended Usage	Each lot of this antibody is quality control tested by immunofluorescent staining with flow cytometric analysis . For flow cytometric staining, the suggested use of this reagent is ≤0.008 µg per million cells in 100 µl volume. It is recommended that the reagent be titrated for optimal performance for each application.
Application References (PubMed link indicates BioLegend citation)	1. Mason D, <i>et al.</i> Eds. 2002. Leucocyte Typing VII. Oxford University Press. New York.
Product Citations	1. Wu A, <i>et al.</i> 2016. Sci Rep. 6:32190. PubMed 2. Riether C, <i>et al.</i> 2021. Cell Reports. 34(4):108663. PubMed 3. Heyde A, <i>et al.</i> 2021. Cell. 184(5):1348-1361.e22. PubMed 4. Szabo PA, <i>et al.</i> 2021. Immunity. 54(4):797-814.e6. PubMed
RRID	AB_2565772 (BioLegend Cat. No. 306617) AB_2565773 (BioLegend Cat. No. 306618)

Antigen Details

Structure	Sialoglycoprotein, 20 kD
Distribution	Erythrocytes

Cell Type	Erythrocytes
Biology Area	Immunology
Molecular Family	CD Molecules
Antigen References	1. Mason D, <i>et al.</i> Eds. 2002. Leucocyte Typing VII. Oxford University Press. New York.
Gene ID	2993

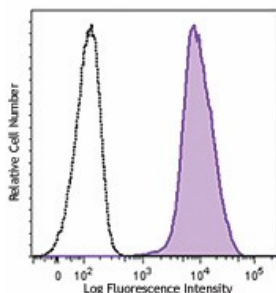
Related Protocols

[Cell Surface Flow Cytometry Staining Protocol](#)

Other Formats

APC anti-human CD235ab, PE anti-human CD235ab, PE/Cyanine5 anti-human CD235ab, Purified anti-human CD235ab, FITC anti-human CD235ab, Pacific Blue™ anti-human CD235ab, PerCP/Cyanine5.5 anti-human CD235ab, Purified anti-human CD235ab (Maxpar® Ready), Biotin anti-human CD235ab, PE/Cyanine7 anti-human CD235ab, APC/Fire™ 750 anti-human CD235ab, TotalSeq™-A0196 anti-human CD235ab, TotalSeq™-C0196 anti-human CD235ab, TotalSeq™-B0196 anti-human CD235ab, TotalSeq™-D0196 anti-human CD235ab

Product Data



Human peripheral blood red cells were stained with biotinylated CD235ab (clone HIR2) (filled histogram) or biotinylated mouse IgG2b, κ isotype control (open histogram), followed by SAV-PE.

For research use only. Not for diagnostic use. Not for resale. BioLegend will not be held responsible for patent infringement or other violations that may occur with the use of our products.

*These products may be covered by one or more Limited Use Label Licenses (see the BioLegend Catalog or our website, www.biolegend.com/ordering#license). BioLegend products may not be transferred to third parties, resold, modified for resale, or used to manufacture commercial products, reverse engineer functionally similar materials, or to provide a service to third parties without written approval of BioLegend. By use of these products you accept the terms and conditions of all applicable Limited Use Label Licenses. Unless otherwise indicated, these products are for research use only and are not intended for human or animal diagnostic, therapeutic or commercial use.

BioLegend Inc., 8999 BioLegend Way, San Diego, CA 92121 www.biolegend.com
Toll-Free Phone: 1-877-Bio-Legend (246-5343) Phone: (858) 768-5800 Fax: (877) 455-9587