

## Anti-human CD3 FITC/(CD16+CD56) PE Cocktail

<b>Catalog# / Size</b>	319101 / 50 tests
<b>Clone</b>	;;;
<b>Regulatory Status</b>	RUO
<b>Isotype</b>	Mouse IgG1/Mouse IgG2a
<b>Description</b>	<p>CD3: UCHT1 antibody reacts with a combinatorial epitope of CD3<math>\epsilon</math>, a 20 kD chain of the CD3/T-cell receptor (TCR) complex found on all mature T lymphocytes, NK-T cells and some thymocytes.</p> <p>CD16: 3G8 antibody reacts with CD16, a 50-65 kD transmembrane or a 48 kD GPI-anchored glycoprotein that is a member of the immunoglobulin superfamily. CD16 is expressed on NK cells, activated monocytes, macrophages, mast cells and neutrophils.</p> <p>CD56: MEM-188 antibody reacts with the 175 - 185 kD isoform of CD56, N-CAM (Neural Cell Adhesion Molecule), which is expressed on NK cells and a subset of CD3<sup>+</sup> T cells. CD56 is also expressed in brain (cerebellum and cortex) and at neuromuscular junctions. Certain large granular lymphocyte (LGL) leukemias, small-cell lung carcinomas, neuronal derived tumors, myelomas, and myeloid leukemias also express CD56.</p>

### Product Details

---

<b>Verified Reactivity</b>	Human
<b>Host Species</b>	Mouse
<b>Formulation</b>	Phosphate-buffered solution, pH 7.2, containing 0.09% sodium azide and 0.2% (w/v) BSA (origin USA).
<b>Preparation</b>	This reagent is a combination of FITC conjugated UCHT1 and PE conjugated 3G8 and MEM-188 in optimal concentration for two-color flow cytometric analysis.
<b>Concentration</b>	Lot-specific (to obtain lot-specific concentration, please enter the lot number in our <a href="#">Concentration and Expiration Lookup</a> or <a href="#">Certificate of Analysis</a> online tools.)
<b>Storage &amp; Handling</b>	The antibody solution should be stored undiluted between 2°C and 8°C, and protected from prolonged exposure to light. <b>Do not freeze.</b>
<b>Application</b>	<a href="#">FC - Quality tested</a>
<b>Recommended Usage</b>	Each lot of this antibody is quality control tested by <a href="#">immunofluorescent staining with flow cytometric analysis</a> . For flow cytometric staining, the suggested use of this reagent is 20 $\mu$ l per million cells or 20 $\mu$ l per 100 $\mu$ l of whole blood. It is recommended that the reagent be titrated for optimal performance for each application.
<b>Application Notes</b>	<b>Note:</b> Single color controls are required to perform instrument compensation and are not included in the kit.
<b>Product Citations</b>	1. Jeff Baker, Joshua Nederveen, Gianni Parise 2017. J Appl Physiol. 122(1):182-190. <a href="#">PubMed</a>
<b>RRID</b>	AB_314999 (BioLegend Cat. No. 319101)

### Antigen Details

---

<b>Distribution</b>	T-cell receptor (TCR) complex found on all mature T lymphocytes, NK-T cells and some thymocytes
<b>Cell Type</b>	Mesenchymal Stem Cells, NKT cells, T cells, Thymocytes
<b>Biology Area</b>	Costimulatory Molecules, Immunology, Innate Immunity, Stem Cells

**Molecular Family** CD Molecules

- Antigen References**
1. Barclay N, *et al.* 1993. The Leucocyte FactsBook. Academic Press. San Diego.
  2. Beverly P, *et al.* 1981. *Eur. J. Immunol.* 11:329.
  3. Lanier L, *et al.* 1986. *J. Immunol.* 137:2501-2507.
  4. Fleit H, *et al.* 1982. *P. Natl. Acad. Sci. USA* 79:3275.
  5. Stroncek D, *et al.* 1991. *Blood* 77:1572.
  6. Wirthmueller U, *et al.* 1992. *J. Exp. Med.* 175:1381.
  7. Lanier L, *et al.* 1991. *J. Immunol.* 146:4421.
  8. Hemperly J, *et al.* 1990. *J. Mol. Neurosci.* 2:71.
  9. Cremer H, *et al.* 1994. *Nature* 367:455.

**Gene ID** [920](#)

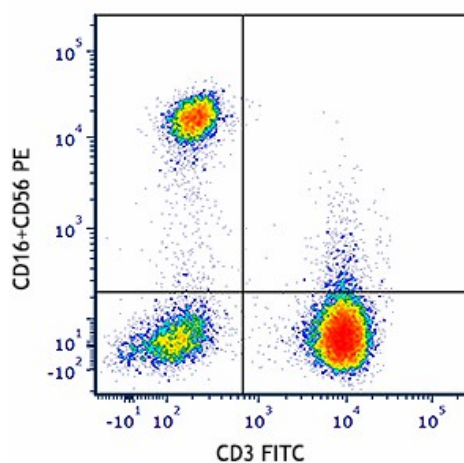
## Related Protocols

[Cell Surface Flow Cytometry Staining Protocol](#)

## Other Formats

Anti-human CD3 FITC/(CD16+CD56) PE Cocktail

## Product Data



Human peripheral blood mononuclear cells were stained with anti-human CD3 FITC/(CD16+CD56) PE cocktail. Dot plot is gated on lymphocyte population.

For research use only. Not for diagnostic use. Not for resale. BioLegend will not be held responsible for patent infringement or other violations that may occur with the use of our products.

\*These products may be covered by one or more Limited Use Label Licenses (see the BioLegend Catalog or our website, [www.biolegend.com/ordering#license](http://www.biolegend.com/ordering#license)). BioLegend products may not be transferred to third parties, resold, modified for resale, or used to manufacture commercial products, reverse engineer functionally similar materials, or to provide a service to third parties without written approval of BioLegend. By use of these products you accept the terms and conditions of all applicable Limited Use Label Licenses. Unless otherwise indicated, these products are for research use only and are not intended for human or animal diagnostic, therapeutic or commercial use.

BioLegend Inc., 8999 BioLegend Way, San Diego, CA 92121 [www.biolegend.com](http://www.biolegend.com)  
Toll-Free Phone: 1-877-Bio-Legend (246-5343) Phone: (858) 768-5800 Fax: (877) 455-9587