

Purified anti-Cystatin C Antibody

Catalog# / Size	667204 / 100 µg
Clone	E4C6(2A10H7)
Regulatory Status	RUO
Other Names	Cystatin-C, Cystatin-3, Gamma-trace, Neuroendocrine basic polypeptide, Post-gamma-globulin, CST3
Isotype	Mouse IgG1
Description	<p>Cystatin C was initially identified in human urine and was named gamma-trace. It is a type II cystatin sub-family member. The cystatin family contains three subfamilies: Type 1 cystatins, also known as stefins, which are predominantly present in the cytosol and the nuclei; Type 2 cystatins are mainly secreted proteins; Type 3 cystatins are multi-domain proteins of high molecular weight (60-120 kD) and are also known as kininogens. Cystatin C inhibits cysteine proteases from the papain family and legumain. It forms tight non-covalent associations with its target enzymes. Cystatin C antagonizes TGF-β signaling in normal and cancer cells <i>in vitro</i>. In this process, Cystatin C binds to the TGF-β type II receptor and inhibits the binding of TGF-β. Cystatin C influences the progression of diseases such as, cancer metastasis, atherosclerosis, aortic aneurisms, emphysema, and arthritis. Also, it is associated with neurodegenerative disease and cerebral angiopathy. Human Cystatin C has the tendency to dimerize in order to produce very tight two-fold symmetric dimers. This amyloidogenic property suggests a mechanism for its aggregation in the brain arteries of elderly people with amyloid angiopathy. The L68Q mutant of human Cystatin C is responsible for conformational disease, which causes massive amyloidosis, cerebral hemorrhage, and death in young adults.</p>

Product Details

Verified Reactivity	Human
Antibody Type	Monoclonal
Host Species	Mouse
Immunogen	Endogenous protein
Formulation	Phosphate-buffered solution, pH 7.2, containing 0.09% sodium azide.
Preparation	The antibody was purified by affinity chromatography.
Concentration	0.5 mg/ml
Storage & Handling	The antibody solution should be stored undiluted between 2°C and 8°C.
Application	WB - Quality tested
Recommended Usage	Each lot of this antibody is quality control tested by Western blotting . For Western blotting, the suggested use of this reagent is 0.5 - 2.5 µg per ml. It is recommended that the reagent be titrated for optimal performance for each application.
RRID	AB_2629541 (BioLegend Cat. No. 667204)

Antigen Details

Structure	Cystatin C is a 13 kD protein which inhibits cystein proteases.
Distribution	Considered ubiquitously expressed, biological fluids, dendritic cells, and macrophages.
Biology Area	Cancer Biomarkers, Cell Biology
Antigen References	<ol style="list-style-type: none">1. Grubb A, <i>et al.</i> 1982. <i>Proc. Nat. Acad. Sci.</i> 79:3024.2. Janowski R, <i>et al.</i> 2001. <i>Nat. Struct. Biol.</i> 8:316.

3. Sokol JP, Schiemann WP. 2004. *Mol. Cancer Res.* 2:183.
4. Bird PI, et al. 2009. *Nat Rev Immunol.* 9:871.
5. Kaur G, Levy E. 2012. *Front Mol. Neurosci.* 5:79.
6. Xu Y, et al. 2014. *J Biol Chem.* 289:9730.
7. Xu Y, et al. 2015. *Immunol. Cell Biol.* 5:442-51.

Gene ID [1471](#)

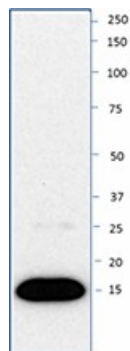
Related Protocols

[Western Blotting Protocol](#)

Other Formats

Purified anti-Cystatin C

Product Data



Recombinant Human Cystatin C (50 ng) was resolved by 4-12% Bis-Tris gel electrophoresis, transferred to nitrocellulose, and probed with purified anti-Cystatin C antibody (clone E4C6(2A10H7)). Proteins were visualized using a goat anti-mouse-IgG secondary antibody conjugated to HRP and chemiluminescence detection.

For research use only. Not for diagnostic use. Not for resale. BioLegend will not be held responsible for patent infringement or other violations that may occur with the use of our products.

*These products may be covered by one or more Limited Use Label Licenses (see the BioLegend Catalog or our website, www.biolegend.com/ordering#license). BioLegend products may not be transferred to third parties, resold, modified for resale, or used to manufacture commercial products, reverse engineer functionally similar materials, or to provide a service to third parties without written approval of BioLegend. By use of these products you accept the terms and conditions of all applicable Limited Use Label Licenses. Unless otherwise indicated, these products are for research use only and are not intended for human or animal diagnostic, therapeutic or commercial use.

BioLegend Inc., 8999 BioLegend Way, San Diego, CA 92121 www.biolegend.com
Toll-Free Phone: 1-877-Bio-Legend (246-5343) Phone: (858) 768-5800 Fax: (877) 455-9587