

PE/Dazzle™ 594 anti-human CD27 Antibody

Catalog# / Size	356421 / 25 tests 356422 / 100 tests
Clone	M-T271
Regulatory Status	RUO
Workshop	V 5T CD27.03
Other Names	S152, T14, TNFRSF7
Isotype	Mouse IgG1, κ
Description	CD27 is a 50-55 kD type I membrane protein also known as S152 and T14. It is a lymphocyte-specific member of the TNF-receptor superfamily. CD27 is expressed on medullary thymocytes, virtually all mature T cells, some B cells, and NK cells. CD27 binds to CD70, and plays a role in costimulation of T cell activation and regulation of B cell differentiation and proliferation. The cytoplasmic domains of CD27 have also been shown to interact with TRAF2 and TRAF5 to elicit NF-κB and SAPK/JNK activation.

Product Details

Verified Reactivity	Human
Reported Reactivity	Baboon, Cynomolgus, Rhesus
Antibody Type	Monoclonal
Host Species	Mouse
Immunogen	Human T cells from a T-ALL patient.
Formulation	Phosphate-buffered solution, pH 7.2, containing 0.09% sodium azide and BSA (origin USA)
Preparation	The antibody was purified by affinity chromatography and conjugated with PE/Dazzle™ 594 under optimal conditions.
Concentration	Lot-specific (to obtain lot-specific concentration, please enter the lot number in our Concentration and Expiration Lookup or Certificate of Analysis online tools.)
Storage & Handling	The antibody solution should be stored undiluted between 2°C and 8°C, and protected from prolonged exposure to light. Do not freeze.
Application	FC - Quality tested
Recommended Usage	Each lot of this antibody is quality control tested by immunofluorescent staining with flow cytometric analysis . For flow cytometric staining, the suggested use of this reagent is 5 µl per million cells in 100 µl staining volume or 5 µl per 100 µl of whole blood. * PE/Dazzle™ 594 has a maximum excitation of 566 nm and a maximum emission of 610 nm.
Excitation Laser	Blue Laser (488 nm) Green Laser (532 nm)/Yellow-Green Laser (561 nm)
Application Notes	Additional reported applications (for the relevant formats) include: immunohistochemical staining of formalin-fixed paraffin-embedded frozen tissue sections ¹ , immunofluorescent staining ² , and ELISA ³ .
Application References	1. Ma S, <i>et al.</i> 2011. <i>J. Virol.</i> 85:165. (IHC) 2. Manzo A, <i>et al.</i> 2008. <i>Arthritis Rheum.</i> 11:3377. (IF) 3. Kato K, <i>et al.</i> 2007. <i>Exp. Hematol.</i> 35:434. (ELISA)
(PubMed link indicates BioLegend citation)	
Product Citations	1. Shuwa HA, <i>et al.</i> 2021. <i>Med.</i> 2(6):720-735.e4. PubMed 2. Hunter S, <i>et al.</i> 2018. <i>J Hepatol.</i> 69:654. PubMed

RRID AB_2564100 (BioLegend Cat. No. 356421)
AB_2564101 (BioLegend Cat. No. 356422)

Antigen Details

Structure	TNF-R superfamily, type I transmembrane glycoprotein, 50-55 kD
Distribution	Medullary thymocytes, T and B cell subsets, NK cells
Interaction	CD27 binds to CD70
Ligand/Receptor	CD70
Cell Type	B cells, NK cells, T cells, Thymocytes
Biology Area	Costimulatory Molecules, Immunology
Molecular Family	CD Molecules
Antigen References	<ol style="list-style-type: none">1. Knapp W, <i>et al.</i> 1989. Leucocyte Typing IV: White Cell Differentiation Antigens. Oxford University Press.2. Schlossman S, <i>et al.</i> 1995. Leucocyte Typing V: White Cell Differentiation Antigens. Oxford University Press.3. Hintzen R, <i>et al.</i> 1994. <i>Immunol. Today</i> 15:307.4. Agematsu K, <i>et al.</i> 1995. <i>J. Immunol.</i> 154:3627.
Gene ID	939

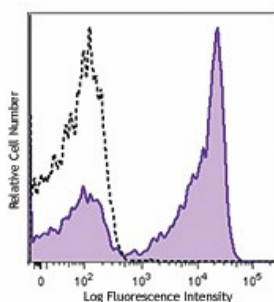
Related Protocols

[Cell Surface Flow Cytometry Staining Protocol](#)

Other Formats

Purified anti-human CD27, FITC anti-human CD27, PE anti-human CD27, PerCP/Cyanine5.5 anti-human CD27, APC anti-human CD27, PE/Cyanine7 anti-human CD27, Pacific Blue™ anti-human CD27, Alexa Fluor® 700 anti-human CD27, Brilliant Violet 421™ anti-human CD27, Brilliant Violet 510™ anti-human CD27, PE/Dazzle™ 594 anti-human CD27, APC/Cyanine7 anti-human CD27, Biotin anti-human CD27, APC/Fire™ 750 anti-human CD27, Brilliant Violet 711™ anti-human CD27, PerCP anti-human CD27, Alexa Fluor® 647 anti-human CD27, KIRAVIA Blue 520™ anti-human CD27, PE/Cyanine5 anti-human CD27

Product Data



Human peripheral blood lymphocytes were stained with CD27 (clone M-T271) PE/Dazzle™ 594 (filled histogram) or mouse IgG1, κ PE/Dazzle™ 594 isotype control (open histogram).

For research use only. Not for diagnostic use. Not for resale. BioLegend will not be held responsible for patent infringement or other violations that may occur with the use of our products.

*These products may be covered by one or more Limited Use Label Licenses (see the BioLegend Catalog or our website, www.biolegend.com/ordering#license). BioLegend products may not be transferred to third parties, resold, modified for resale, or used to manufacture commercial products, reverse engineer functionally similar materials, or to provide a service to third parties without written approval of BioLegend. By use of these products you accept the terms and conditions of all applicable Limited Use Label Licenses. Unless otherwise indicated, these products are for research use only and are not intended for human or animal diagnostic, therapeutic or commercial use.

BioLegend Inc., 8999 BioLegend Way, San Diego, CA 92121 www.biolegend.com
Toll-Free Phone: 1-877-Bio-Legend (246-5343) Phone: (858) 768-5800 Fax: (877) 455-9587