

## APC anti-human CD258 (LIGHT) Antibody

<b>Catalog# / Size</b>	318709 / 25 tests 318710 / 100 tests
<b>Clone</b>	T5-39
<b>Regulatory Status</b>	RUO
<b>Other Names</b>	LIGHT, TL5, TNFSF14, TR2 ligand, Ligand for herpesvirus entry mediator, tumor necrosis factor receptor-like-2 ligand, tumor necrosis factor ligand superfamily member 14 (TNFSF14)
<b>Isotype</b>	Mouse IgG2b, $\kappa$
<b>Description</b>	The T5-39 antibody recognizes human LIGHT (CD258) also known as ligand for herpesvirus entry mediator, tumor necrosis factor receptor-like-2 ligand, TR2 ligand, and tumor necrosis factor ligand superfamily member 14 (TNFSF14). LIGHT is a type 2 transmembrane protein, and a member of the tumor necrosis factor ligand superfamily. LIGHT can be proteolytically cleaved and two isoforms have been shown to be produced by alternative splicing. The apparent molecular weight of LIGHT is approximately 30 kD. LIGHT expression has been observed in spleen, brain and kidney; expression is upregulated on activated T cells (particularly CD8 <sup>+</sup> cells). LIGHT stimulates proliferation of T cells and inhibits growth of some tumor cells. This protein has been shown to play a role in intestinal inflammation and contribute to IgA nephropathy. LIGHT is a ligand for HVEM, and LT $\beta$ R and has also been shown to bind DcR3 and modulate function. In addition, LIGHT has been shown to interact with other proteins including TRAF2, TRAF3, and DIABLO. The T5-39 antibody has been shown to be useful for flow cytometry and ELISA.

### Product Details

---

<b>Verified Reactivity</b>	Human, Rhesus
<b>Antibody Type</b>	Monoclonal
<b>Host Species</b>	Mouse
<b>Immunogen</b>	recombinant human LIGHT (TL5) protein
<b>Formulation</b>	Phosphate-buffered solution, pH 7.2, containing 0.09% sodium azide and BSA (origin USA)
<b>Preparation</b>	The antibody was purified by affinity chromatography and conjugated with APC under optimal conditions.
<b>Concentration</b>	Lot-specific (to obtain lot-specific concentration, please enter the lot number in our <a href="#">Concentration and Expiration Lookup</a> or <a href="#">Certificate of Analysis</a> online tools.)
<b>Storage &amp; Handling</b>	The antibody solution should be stored undiluted between 2°C and 8°C, and protected from prolonged exposure to light. <b>Do not freeze.</b>
<b>Application</b>	<a href="#">FC - Quality tested</a>
<b>Recommended Usage</b>	Each lot of this antibody is quality control tested by <a href="#">immunofluorescent staining with flow cytometric analysis</a> . For flow cytometric staining, the suggested use of this reagent is 5 $\mu$ l per million cells in 100 $\mu$ l staining volume or 5 $\mu$ l per 100 $\mu$ l of whole blood.
<b>Excitation Laser</b>	Red Laser (633 nm)
<b>RRID</b>	AB_2728269 (BioLegend Cat. No. 318709) AB_2728270 (BioLegend Cat. No. 318710)

### Antigen Details

---

<b>Structure</b>	Type 2 transmembrane protein, member of the tumor necrosis factor ligand superfamily. Can be proteolytically cleaved; two isoforms produced by alternative splicing. Apparent molecular weight approximately 30 kD.
------------------	---

<b>Distribution</b>	Spleen, brain and kidney. Upregulated on activated T cells (particularly CD8 <sup>+</sup> cells)
<b>Function</b>	Stimulates proliferation of T cells, inhibits growth of some tumor cells. Has been shown to play a role in intestinal inflammation and contribute to IgA nephropathy
<b>Interaction</b>	TRAF2, TRAF3, DIABLO
<b>Ligand/Receptor</b>	Ligand for HVEM, LTβR. Has also been shown to bind DcR3
<b>Cell Type</b>	T cells
<b>Biology Area</b>	Cell Biology, Immunology
<b>Molecular Family</b>	CD Molecules, Cytokine/Chemokine Receptors
<b>Antigen References</b>	<ol style="list-style-type: none"> <li>1. Mauri DN, <i>et al.</i> 1998. <i>Immunity</i> 8:21.</li> <li>2. Harrop JA, <i>et al.</i> 1998. <i>J. Biol. Chem.</i> 273:27548.</li> <li>3. Morel Y, <i>et al.</i> 2000. <i>J. Immunol.</i> 165:4397.</li> <li>4. Wang J, <i>et al.</i> 2004. <i>J. Clin. Invest.</i> 113:826.</li> <li>5. Yu P, <i>et al.</i> 2004. <i>Nature Immunol.</i> 5:141.</li> </ol>
<b>Gene ID</b>	<a href="#">8740</a>

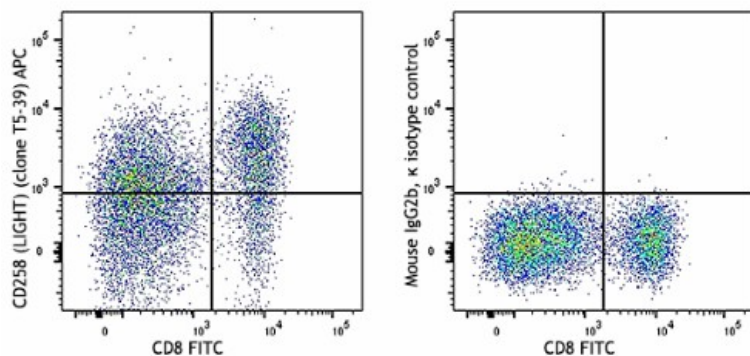
## Related Protocols

[Cell Surface Flow Cytometry Staining Protocol](#)

## Other Formats

PE/Cyanine7 anti-human CD258 (LIGHT), APC anti-human CD258 (LIGHT), TotalSeq™-C1056 anti-human CD258 (LIGHT), TotalSeq™-D1056 anti-human CD258 (LIGHT), TotalSeq™-B1056 anti-human CD258 (LIGHT), Biotin anti-human CD258 (LIGHT), PE anti-human CD258 (LIGHT)

## Product Data



PMA/ionomycin-stimulated (day-2) human peripheral blood lymphocytes stained with CD8 FITC and CD258/LIGHT (clone T5-39) APC (left) or mouse IgG2b, κ APC isotype control (right).

For research use only. Not for diagnostic use. Not for resale. BioLegend will not be held responsible for patent infringement or other violations that may occur with the use of our products.

\*These products may be covered by one or more Limited Use Label Licenses (see the BioLegend Catalog or our website, [www.biolegend.com/ordering#license](http://www.biolegend.com/ordering#license)). BioLegend products may not be transferred to third parties, resold, modified for resale, or used to manufacture commercial products, reverse engineer functionally similar materials, or to provide a service to third parties without written approval of BioLegend. By use of these products you accept the terms and conditions of all applicable Limited Use Label Licenses. Unless otherwise indicated, these products are for research use only and are not intended for human or animal diagnostic, therapeutic or commercial use.

BioLegend Inc., 8999 BioLegend Way, San Diego, CA 92121 [www.biolegend.com](http://www.biolegend.com)  
Toll-Free Phone: 1-877-Bio-Legend (246-5343) Phone: (858) 768-5800 Fax: (877) 455-9587