

Purified anti-Apo E4 Antibody (Previously Covance catalog# SIG-39754)

Catalog# / Size	813701 / 200 µL 813702 / 1 mL
Clone	9D11
Regulatory Status	RUO
Other Names	Apolipoprotein E, apolipoprotein E4
Previously	Covance Catalog# SIG-39754
Isotype	Mouse IgG1, κ
Description	<p>Apolipoprotein E (ApoE) belongs to a class of apolipoproteins that binds to lipids to form lipoproteins. ApoE is produced by the liver and macrophages in peripheral tissues where it regulates cholesterol metabolism. In the central nervous system, ApoE is primarily produced by astrocytes and plays an important role in transporting cholesterol to neurons via ApoE receptors. ApoE has three major isoforms corresponding to three alleles (ApoE2, ApoE3 and ApoE4) that differ from each other by only one or two amino acids at positions 112 and 158. ApoE4 is one of the largest known genetic risk factors for late-onset Alzheimer's disease. Further, ApoE4 has been implicated in several other diseases such as atherosclerosis, impaired cognitive function and multiple sclerosis.</p>

Product Details

Verified Reactivity	Human
Antibody Type	Monoclonal
Host Species	Mouse
Formulation	Phosphate-buffered solution (no preservatives or carrier proteins).
Preparation	The antibody was purified by affinity chromatography.
Concentration	0.5 mg/ml
Storage & Handling	The antibody solution should be stored undiluted between 2°C and 8°C. Please note the storage condition for this antibody has been changed from -20°C to between 2°C and 8°C. You can also check your vial or your CoA to find the most accurate storage condition for this antibody.
Application	ELISA Capture - Quality tested
Recommended Usage	Each lot of this antibody is quality control tested by ELISA assay . For ELISA Capture applications, a concentration range of 3 - 5 µg/mL is recommended. It is recommended that the reagent be titrated for optimal performance for each application.
Application Notes	This antibody is specific for the E4 isoform of apolipoprotein E.
RRID	AB_2564775 (BioLegend Cat. No. 813701) AB_2564774 (BioLegend Cat. No. 813702)

Antigen Details

Structure	Predicted MW = 34 kD
Biology Area	Cell Biology, Neurodegeneration, Neuroscience, Protein Trafficking and Clearance
Gene ID	348

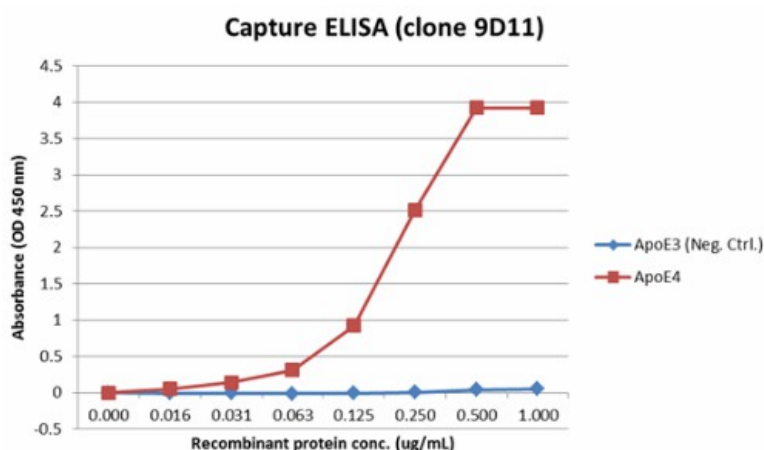
Related Protocols

[Sandwich ELISA Protocol](#)

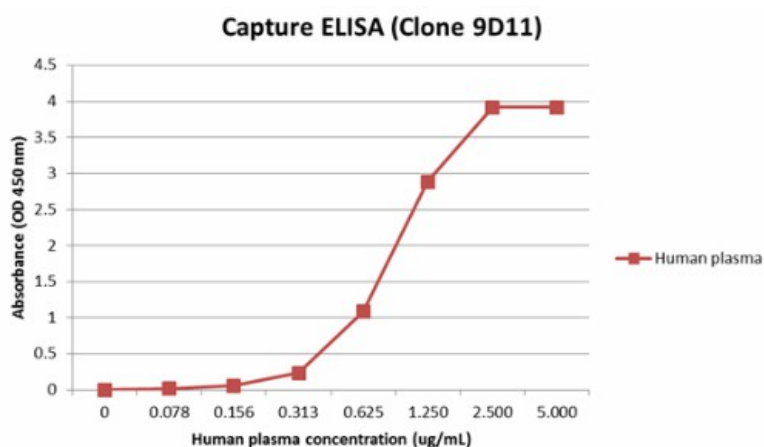
Other Formats

Purified anti-Apo E4

Product Data



Capture ELISA of purified anti-Apo E4 antibody (clone 9D11) binding to recombinant human Apo E4 and Apo E3 proteins. ELISA was performed by coating wells with 150 ng of purified anti-Apo E4 antibody (clone 9D11). The wells were then incubated at 37°C for 2 h with serially diluted (0.016 µg/mL to 1 µg/mL) recombinant proteins, followed by incubation with 1.5 µg/mL of biotin anti-Apo E (clone D6E10) as the detection antibody at 37°C for 45 minutes. HRP Streptavidin (Cat. No. 405210) was used as secondary antibody and TMB (3, 3', 5, 5' tetramethylbenzidine, Cat. No. 421501) was used as the detection system.



Capture ELISA of purified anti-Apo E4 antibody (clone 9D11) binding to human plasma. ELISA was performed by coating wells with 150 ng of purified anti-Apo E4 antibody (clone 9D11). The wells were then incubated at 37°C for 2 h with serially diluted (0.078 µg/mL to 5 µg/mL) human plasma, followed by incubation with 1.5 µg/mL of biotin anti-Apo E (clone D6E10) as the detection antibody at 37°C for 45 minutes. HRP Streptavidin (Cat. No. 405210) was used as secondary antibody and TMB (3, 3', 5, 5' tetramethylbenzidine, Cat. No. 421501) was used as the detection system.

For research use only. Not for diagnostic use. Not for resale. BioLegend will not be held responsible for patent infringement or other violations that may occur with the use of our products.

*These products may be covered by one or more Limited Use Label Licenses (see the BioLegend Catalog or our website, www.biolegend.com/ordering#license). BioLegend products may not be transferred to third parties, resold, modified for resale, or used to manufacture commercial products, reverse engineer functionally similar materials, or to provide a service to third parties without written approval of BioLegend. By use of these products you accept the terms and conditions of all applicable Limited Use Label Licenses. Unless otherwise indicated, these products are for research use only and are not intended for human or animal diagnostic, therapeutic or commercial use.

BioLegend Inc., 8999 BioLegend Way, San Diego, CA 92121 www.biolegend.com
Toll-Free Phone: 1-877-Bio-Legend (246-5343) Phone: (858) 768-5800 Fax: (877) 455-9587