

## PE anti-mouse CD355 (CRTAM) Antibody

<b>Catalog# / Size</b>	142005 / 25 µg 142006 / 100 µg
<b>Clone</b>	11-5/CRTAM
<b>Regulatory Status</b>	RUO
<b>Other Names</b>	Class I-restricted T cell-associated molecule
<b>Isotype</b>	Rat IgG2a, κ
<b>Description</b>	Class-I MHC-restricted T-cell associated molecule (CRTAM), designated as CD355, is an Ig domain like type I transmembrane receptor, which belongs to the nectin family. In the immune system, CRTAM is strictly expressed on activated NK cells and activated CD8-positive T cells. By binding its ligand Nectin-like molecule 2 (Nect2), CRTAM plays an important role in mediating cell adhesion and migration.

### Product Details

---

<b>Reactivity</b>	Mouse
<b>Antibody Type</b>	Monoclonal
<b>Host Species</b>	Rat
<b>Immunogen</b>	CRTAM extracellular region-human IgG Fc fusion protein
<b>Formulation</b>	Phosphate-buffered solution, pH 7.2, containing 0.09% sodium azide.
<b>Preparation</b>	The antibody was purified by affinity chromatography and conjugated with PE under optimal conditions.
<b>Concentration</b>	0.2 mg/ml
<b>Storage &amp; Handling</b>	The antibody solution should be stored undiluted between 2°C and 8°C, and protected from prolonged exposure to light. <b>Do not freeze.</b>
<b>Application</b>	<a href="#">FC - Quality tested</a>
<b>Recommended Usage</b>	Each lot of this antibody is quality control tested by <a href="#">immunofluorescent staining with flow cytometric analysis</a> . For flow cytometric staining, the suggested use of this reagent is ≤0.25 µg per million cells in 100 µl volume. It is recommended that the reagent be titrated for optimal performance for each application.
<b>Excitation Laser</b>	Blue Laser (488 nm) Green Laser (532 nm)/Yellow-Green Laser (561 nm)
<b>Application Notes</b>	Additional reported applications (for relevant formats) include: Western blotting <sup>1</sup> .
<b>Application References</b>	1. Arase N, <i>et al.</i> 2005. <i>Int. Immunol.</i> 17:1227. (WB)
<b>(PubMed link indicates BioLegend citation)</b>	
<b>RRID</b>	AB_10896791 (BioLegend Cat. No. 142005) AB_10900439 (BioLegend Cat. No. 142006)

### Antigen Details

---

<b>Structure</b>	75 kD homodimer, nectin family, Ig superfamily
<b>Distribution</b>	Activated NK cells and activated CD8-positive T cells

<b>Function</b>	Cell adhesion, migration
<b>Ligand/Receptor</b>	Nectin-like molecule 2
<b>Cell Type</b>	NK cells, T cells
<b>Biology Area</b>	Cell Adhesion, Cell Biology, Immunology, Innate Immunity, Signal Transduction
<b>Molecular Family</b>	Adhesion Molecules, CD Molecules
<b>Antigen References</b>	<ol style="list-style-type: none"> <li>1. Takeuchi A, <i>et al.</i> 2009. <i>J. Immunol.</i> 183:4220.</li> <li>2. Yeh JH, <i>et al.</i> 2008. <i>Cell</i> 132:846.</li> <li>3. Arase N. 2005. <i>Int. Immunol.</i> 17:1227.</li> <li>4. Boles KS, <i>et al.</i> 2005. <i>Blood</i> 106:779.</li> <li>5. Galibert L, <i>et al.</i> 2005 <i>J. Biol. Chem.</i> 280:21955.</li> <li>6. Kennedy J, <i>et al.</i> 2000 <i>J. Leukoc. Biol.</i> 67:725.</li> </ol>
<b>Gene ID</b>	<a href="#">54698</a>

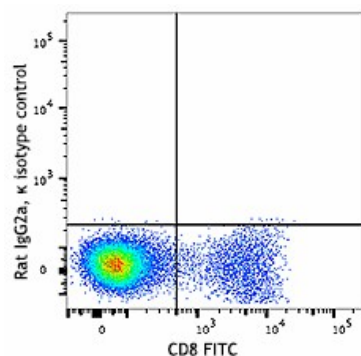
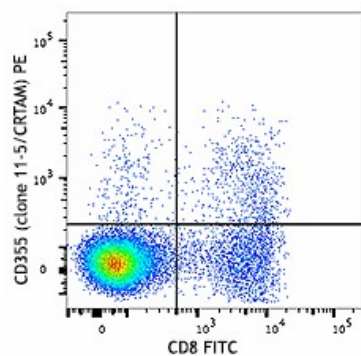
## Related Protocols

[Cell Surface Flow Cytometry Staining Protocol](#)

## Other Formats

Purified anti-mouse CD355 (CRTAM), PE anti-mouse CD355 (CRTAM), APC anti-mouse CD355 (CRTAM), Biotin anti-mouse CD355 (CRTAM), PerCP/Cyanine5.5 anti-mouse CD355 (CRTAM), PE/Cyanine7 anti-mouse CD355 (CRTAM)

## Product Data



C57BL/6 mouse splenocytes were stimulated (overnight) with immobilized anti-mouse TCR- $\beta$  (clone H57-597). Cell were then stained with CD8 FITC and CD355 (clone 11-5/CRTAM) PE (top) or rat IgG2a,  $\kappa$  PE isotype control (bottom).

For research use only. Not for diagnostic use. Not for resale. BioLegend will not be held responsible for patent infringement or other violations that may occur with the use of our products.

\*These products may be covered by one or more Limited Use Label Licenses (see the BioLegend Catalog or our website, [www.biolegend.com/ordering#license](http://www.biolegend.com/ordering#license)). BioLegend products may not be transferred to third parties, resold, modified for resale, or used to manufacture commercial products, reverse engineer functionally similar materials, or to provide a service to third parties without written approval of BioLegend. By use of these products you accept the terms and conditions of all

applicable Limited Use Label Licenses. Unless otherwise indicated, these products are for research use only and are not intended for human or animal diagnostic, therapeutic or commercial use.

BioLegend Inc., 8999 BioLegend Way, San Diego, CA 92121 [www.biolegend.com](http://www.biolegend.com)  
Toll-Free Phone: 1-877-Bio-Legend (246-5343) Phone: (858) 768-5800 Fax: (877) 455-9587