

## PE anti-human CD355 (CRTAM) Antibody

<b>Catalog# / Size</b>	339106 / 100 tests
<b>Clone</b>	Cr24.1
<b>Regulatory Status</b>	RUO
<b>Other Names</b>	Class I-MHC-Restricted T-cell Associated Molecule
<b>Isotype</b>	Mouse IgG2a, $\kappa$
<b>Description</b>	CRTAM, (class-I MHC-restricted T-cell associated molecule), is homodimer protein belonging to Ig superfamily. It is expressed transiently on activated NK cells, NKT cells and a subset of CD8 <sup>+</sup> T cells. Nectin-like molecule-2 (Nect2, TSCL1) is the ligand of CRTAM. CRTAM plays an important role in cell adhesion and migration.

### Product Details

---

<b>Verified Reactivity</b>	Human
<b>Antibody Type</b>	Monoclonal
<b>Host Species</b>	Mouse
<b>Immunogen</b>	CRTAM-P815 cells
<b>Formulation</b>	Phosphate-buffered solution, pH 7.2, containing 0.09% sodium azide and BSA (origin USA)
<b>Preparation</b>	The antibody was purified by affinity chromatography, and conjugated with PE under optimal conditions.
<b>Concentration</b>	Lot-specific (to obtain lot-specific concentration, please enter the lot number in our <a href="#">Concentration and Expiration Lookup</a> or <a href="#">Certificate of Analysis</a> online tools.)
<b>Storage &amp; Handling</b>	The antibody solution should be stored undiluted between 2°C and 8°C, and protected from prolonged exposure to light. <b>Do not freeze.</b>
<b>Application</b>	<a href="#">FC - Quality tested</a>
<b>Recommended Usage</b>	Each lot of this antibody is quality control tested by <a href="#">immunofluorescent staining with flow cytometric analysis</a> . For flow cytometric staining, the suggested use of this reagent is 5 $\mu$ l per million cells in 100 $\mu$ l staining volume or 5 $\mu$ l per 100 $\mu$ l of whole blood.
<b>Excitation Laser</b>	Blue Laser (488 nm) Green Laser (532 nm)/Yellow-Green Laser (561 nm)
<b>Application References</b>	1. Kent S, <i>et al.</i> 2005. <i>Blood</i> . 106:779
<b>(PubMed link indicates BioLegend citation)</b>	
<b>Product Citations</b>	1. Bloom DD, <i>et al.</i> 2018. <i>J Immunother.</i> 41:213. <a href="#">PubMed</a>
<b>RRID</b>	AB_2085907 (BioLegend Cat. No. 339106)

### Antigen Details

---

<b>Structure</b>	Dimer, Ig superfamily
<b>Distribution</b>	Activated NK cells and subset of CD8 <sup>+</sup> cells
<b>Function</b>	Adhesion and migration

<b>Ligand/Receptor</b>	Nectin-like molecule 2 (Necl2)
<b>Cell Type</b>	NK cells, T cells
<b>Biology Area</b>	Immunology
<b>Molecular Family</b>	Adhesion Molecules, CD Molecules, MHC Antigens
<b>Antigen References</b>	1. Arase N, <i>et al.</i> 2005. <i>Intl. Immunol.</i> 17:1227 2. Kennedy J, <i>et al.</i> 2000. <i>J. Leukoc. Biol.</i> 67:725
<b>Gene ID</b>	<a href="#">56253</a>

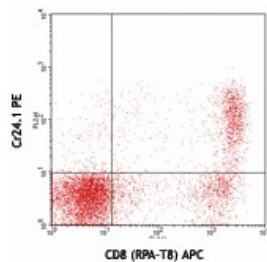
## Related Protocols

[Cell Surface Flow Cytometry Staining Protocol](#)

## Other Formats

PerCP/Cyanine5.5 anti-human CD355 (CRTAM), Ultra-LEAF™ Purified anti-human CD355 (CRTAM), Purified anti-human CD355 (CRTAM), PE anti-human CD355 (CRTAM), APC anti-human CD355 (CRTAM)

## Product Data



PMA/ionomycin-stimulated (4 hours)  
human peripheral blood lymphocytes  
stained with Cr24.1 PE and CD8 (RPA-  
T8) APC

For research use only. Not for diagnostic use. Not for resale. BioLegend will not be held responsible for patent infringement or other violations that may occur with the use of our products.

\*These products may be covered by one or more Limited Use Label Licenses (see the BioLegend Catalog or our website, [www.biolegend.com/ordering#license](http://www.biolegend.com/ordering#license)). BioLegend products may not be transferred to third parties, resold, modified for resale, or used to manufacture commercial products, reverse engineer functionally similar materials, or to provide a service to third parties without written approval of BioLegend. By use of these products you accept the terms and conditions of all applicable Limited Use Label Licenses. Unless otherwise indicated, these products are for research use only and are not intended for human or animal diagnostic, therapeutic or commercial use.

BioLegend Inc., 8999 BioLegend Way, San Diego, CA 92121 [www.biolegend.com](http://www.biolegend.com)  
Toll-Free Phone: 1-877-Bio-Legend (246-5343) Phone: (858) 768-5800 Fax: (877) 455-9587