

PE anti-Apo E Antibody

Catalog# / Size	803404 / 25 tests 803405 / 100 tests
Clone	E6D7
Regulatory Status	RUO
Other Names	Apolipoprotein E, apolipoprotein E3, AD2, LDLQC5, LPG, ApoE
Isotype	Mouse IgG1, κ
Description	Apo-E is a class of apolipoprotein primarily synthesized in the liver, but is also found in other tissues such as brain, kidneys, and spleen. Apo-E is a protein component of serum chylomicron and lipoprotein particles, playing essential roles in cholesterol transportation, homeostasis, and metabolism. The expression of Apo-E is induced by cholesterol-rich diets and hyperlipoproteinemia. In the central nervous system, Apo-E is produced by astrocytes and microglia. The Apo-E-containing lipoprotein particles play important functions in brain injury repair, neurogenesis, and synaptic plasticity. Apo-E has been found to be involved in the regulation of amyloid-β aggregation and clearance. Genetic polymorphisms of Apo-E are associated with neuron degenerative disorders including Alzheimer's disease.

Product Details

Verified Reactivity	Human
Antibody Type	Monoclonal
Host Species	Mouse
Immunogen	This antibody was raised against a synthetic peptide corresponding to amino acids surrounding the polymorphic amino acid position 158 of Apo-E.
Formulation	Phosphate-buffered solution, pH 7.2, containing 0.09% sodium azide and BSA (origin USA)
Preparation	The antibody was purified by affinity chromatography and conjugated with PE under optimal conditions.
Concentration	Lot-specific (to obtain lot-specific concentration, please enter the lot number in our Concentration and Expiration Lookup or Certificate of Analysis online tools.)
Storage & Handling	The antibody solution should be stored undiluted between 2°C and 8°C, and protected from prolonged exposure to light. Do not freeze.
Application	ICFC - Quality tested
Recommended Usage	Each lot of this antibody is quality control tested by intracellular immunofluorescent staining with flow cytometric analysis . For flow cytometric staining, the suggested use of this reagent is 5 µl per million cells in 100 µl staining volume or 5 µl per 100 µl of whole blood.
Excitation Laser	Blue Laser (488 nm) Green Laser (532 nm)/Yellow-Green Laser (561 nm)
Application Notes	This antibody is effective in immunoblotting (WB). Clone E6D7 recognizes the E2, E3, and E4 isoforms of apolipoprotein E.
Application References	<ol style="list-style-type: none"> Munoz DG, Feldman H. 2000. <i>CMAJ</i>. 162(1):65-72. Hagberg JM, et al. 2000. <i>Physiol Genomics</i> 4(2):101-108. Saunders AM. 2000. <i>J. Neuropathol. Exp. Neurol.</i> 59(9):751-8. Golabek AA, et al. 2000. <i>Biophys. J.</i> 79(2):1008-15. Zunarelli E, et al. 2000. <i>Breast Cancer Res. Treat.</i> 63(3):193-8. Zunarelli E, et al. 2000. <i>Clin. Neuropathol.</i> 19(1):1-6. Tomiyaama T, et al. 1999. <i>Cell Mol. Life Sci.</i> 56(3-4):268-79. Golabek AA., et al. 1999. <i>J. Biol. Chem.</i> 271(18):10602-6.
(PubMed link indicates BioLegend citation)	

RRID

AB_2801139 (BioLegend Cat. No. 803404)
AB_2801140 (BioLegend Cat. No. 803405)

Antigen Details

Cell Type	Astrocytes, Mature Neurons, Microglia, Monocytes, Neurons, Oligodendrocytes
Biology Area	Cell Biology, Neurodegeneration, Neuroscience, Neuroscience Cell Markers, Protein Misfolding and Aggregation, Protein Trafficking and Clearance
Molecular Family	APP/A β Degradation, Apolipoproteins
Gene ID	348

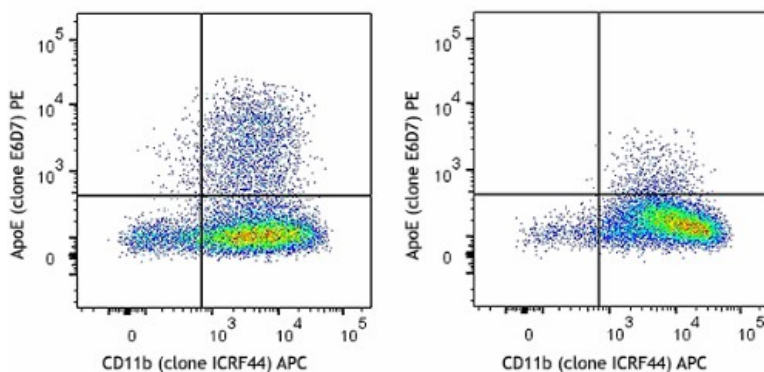
Related Protocols

[Intracellular Flow Cytometry Staining Protocol](#)

Other Formats

Purified anti-Apo E , PE anti-Apo E

Product Data



Human PBMC monocytes were cultured overnight with (left) or without (right) 100ng/mL recombinant human TGF- β 1 followed by a 4 hour addition of 1X Brefeldin A (left) or DMSO (right). Cells were then fixed with Fixation Buffer (BioLegend Cat. No. 420801) and permeabilized with Intracellular Staining Permeabilization Wash Buffer (10X) (BioLegend Cat. No. 421002). Cells were stained with CD11b (clone ICRF44) APC and anti-ApoE Antibody (clone E6D7) PE.

For research use only. Not for diagnostic use. Not for resale. BioLegend will not be held responsible for patent infringement or other violations that may occur with the use of our products.

*These products may be covered by one or more Limited Use Label Licenses (see the BioLegend Catalog or our website, www.biolegend.com/ordering#license). BioLegend products may not be transferred to third parties, resold, modified for resale, or used to manufacture commercial products, reverse engineer functionally similar materials, or to provide a service to third parties without written approval of BioLegend. By use of these products you accept the terms and conditions of all applicable Limited Use Label Licenses. Unless otherwise indicated, these products are for research use only and are not intended for human or animal diagnostic, therapeutic or commercial use.

BioLegend Inc., 8999 BioLegend Way, San Diego, CA 92121 www.biolegend.com
Toll-Free Phone: 1-877-Bio-Legend (246-5343) Phone: (858) 768-5800 Fax: (877) 455-9587