

## HRP anti-Apo E Antibody

<b>Catalog# / Size</b>	803307 / 25 µg 803308 / 100 µg
<b>Clone</b>	D6E10
<b>Regulatory Status</b>	RUO
<b>Other Names</b>	Apolipoprotein E, apolipoprotein E3, AD2, LDLQC5, LPG, ApoE
<b>Isotype</b>	Mouse IgG1
<b>Description</b>	Apo-E is a class of apolipoprotein primarily synthesized in the liver, but is also found in other tissues such as brain, kidneys, and spleen. Apo-E is a protein component of serum chylomicron and lipoprotein particles, playing essential roles in cholesterol transportation, homeostasis, and metabolism. The expression of Apo-E is induced by cholesterol-rich diets and hyperlipoproteinemia. In the central nervous system, Apo-E is produced by astrocytes and microglia. The Apo-E-containing lipoprotein particles play important functions in brain injury repair, neurogenesis, and synaptic plasticity. Apo-E has been found to be involved in the regulation of amyloid-β aggregation and clearance. Genetic polymorphisms of Apo-E are associated with neuron degenerative disorders including Alzheimer's disease.

### Product Details

---

<b>Verified Reactivity</b>	Human
<b>Antibody Type</b>	Monoclonal
<b>Host Species</b>	Mouse
<b>Immunogen</b>	This antibody was raised against a peptide sequence corresponding to aa 141-160 of human Apo-E.
<b>Formulation</b>	This antibody is provided in 50% glycerol in aqueous buffered solutions with preservatives.
<b>Preparation</b>	The antibody was purified by affinity chromatography and conjugated with HRP under optimal conditions.
<b>Concentration</b>	0.5 mg/ml
<b>Storage &amp; Handling</b>	Upon receipt, the antibody solution should be stored undiluted at -20°C, and protected from prolonged exposure to light.
<b>Application</b>	<a href="#">WB - Quality tested</a>
<b>Recommended Usage</b>	Each lot of this antibody is quality control tested by <a href="#">Western blotting</a> . For Western blotting, the suggested use of this reagent is 1.0 - 5.0 µg per ml. It is recommended that the reagent be titrated for optimal performance for each application.
<b>Application Notes</b>	This antibody is effective in immunoblotting (WB).
<b>Application References</b>	<ol style="list-style-type: none"> <li>Munoz DG and Feldman H. 2000. <i>CMAJ</i>. 162(1):65-72.</li> <li>Hagberg JM, et al. 2000. <i>Physiol Genomics</i>. 4(2):101-108.</li> <li>Saunders AM. 2000. <i>J Neuropathol Exp Neurol</i>. 59(9):751-8.</li> <li>Golabek AA, et al. 2000. <i>Biophys J</i>. 79(2):1008-15.</li> <li>Zunarelli E, et al. 2000. <i>Breast Cancer Res Treat</i>. 63(3):193-8.</li> <li>Zunarelli E, et al. 2000. <i>Clin Neuropathol</i>. 19(1):1-6.</li> <li>Tomiyama T, et al. 1999. <i>Cell Mol Life Sci</i>. 6(3-4):268-79.</li> <li>Golabek AA, et al. 1996. <i>J Biol Chem</i>. 271(18):10602-6.</li> </ol>
<b>RRID</b>	AB_2783379 (BioLegend Cat. No. 803307) AB_2783380 (BioLegend Cat. No. 803308)

(PubMed link indicates BioLegend citation)

## Antigen Details

**Biology Area** Cell Biology, Neurodegeneration, Neuroscience, Protein Trafficking and Clearance  
**Gene ID** [348](#)

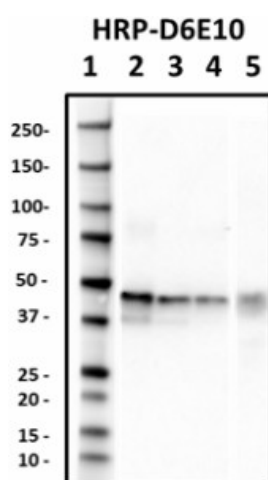
## Related Protocols

[Western Blotting Protocol](#)

## Other Formats

Purified anti-Apo E , Biotin anti-Apo E, HRP anti-Apo E

## Product Data



Western blot of HRP anti-Apo E antibody (clone D6E10). Lane 1: Molecular weight marker; Lane 2: 50 ng of Apo E2 recombinant human protein; Lane 3: 50 ng of Apo E3 recombinant human protein; Lane 4: 50 ng of Apo E4 recombinant human protein; Lane 5: 40 µg of human plasma. The blot was incubated with 1 µg/mL of the primary antibody at 4°C overnight. Enhanced chemiluminescence (Cat. No. 426302) was used as the detection system.

For research use only. Not for diagnostic use. Not for resale. BioLegend will not be held responsible for patent infringement or other violations that may occur with the use of our products.

\*These products may be covered by one or more Limited Use Label Licenses (see the BioLegend Catalog or our website, [www.biolegend.com/ordering#license](http://www.biolegend.com/ordering#license)). BioLegend products may not be transferred to third parties, resold, modified for resale, or used to manufacture commercial products, reverse engineer functionally similar materials, or to provide a service to third parties without written approval of BioLegend. By use of these products you accept the terms and conditions of all applicable Limited Use Label Licenses. Unless otherwise indicated, these products are for research use only and are not intended for human or animal diagnostic, therapeutic or commercial use.

BioLegend Inc., 8999 BioLegend Way, San Diego, CA 92121 [www.biolegend.com](http://www.biolegend.com)  
Toll-Free Phone: 1-877-Bio-Legend (246-5343) Phone: (858) 768-5800 Fax: (877) 455-9587