

PE anti-human NKp80 Antibody

Catalog# / Size	346706 / 100 tests
Clone	5D12
Regulatory Status	RUO
Other Names	KLRF1, killer cell lectin-like receptor subfamily F, member 1
Isotype	Mouse IgG1, κ
Description	NKp80, also known as killer cell lectin-like receptor subfamily F, member 1 (KLRF1), is a type II transmembrane C-type lectin-like receptor. NKp80 is expressed on the cell surface of nearly all NK cells as a homodimer with approximately 80 kD molecular mass. It is also found on a subset of effector memory CD8 T cells and γ/δ T cells. NKp80 induces NK-cell mediated cytotoxicity and cytokine production through interaction with its ligand, AICL (activation-induced C-type lectin), which is selectively expressed on myeloid cells.

Product Details

Verified Reactivity	Human
Reported Reactivity	African Green, Baboon, Cynomolgus, Rhesus
Antibody Type	Monoclonal
Host Species	Mouse
Immunogen	Recombinant ectodomain of human NKp80
Formulation	Phosphate-buffered solution, pH 7.2, containing 0.09% sodium azide and BSA (origin USA)
Preparation	The antibody was purified by affinity chromatography, and conjugated with PE under optimal conditions.
Concentration	Lot-specific (to obtain lot-specific concentration, please enter the lot number in our Concentration and Expiration Lookup or Certificate of Analysis online tools.)
Storage & Handling	The antibody solution should be stored undiluted between 2°C and 8°C, and protected from prolonged exposure to light. Do not freeze.
Application	FC - Quality tested
Recommended Usage	Each lot of this antibody is quality control tested by immunofluorescent staining with flow cytometric analysis . For flow cytometric staining, the suggested use of this reagent is 5 µl per million cells in 100 µl staining volume or 5 µl per 100 µl of whole blood.
Excitation Laser	Blue Laser (488 nm) Green Laser (532 nm)/Yellow-Green Laser (561 nm)
Application References	1. Welte S, <i>et al.</i> 2006. <i>Nat. Immunol.</i> 7:1334. 2. Kuttruff S, <i>et al.</i> 2009. <i>Blood</i> 113:358.
(PubMed link indicates BioLegend citation)	
Product Citations	1. Yang C, <i>et al.</i> 2019. <i>Nat Commun.</i> 10:3931. PubMed 2. Manser AR, <i>et al.</i> 2019. <i>J Immunol.</i> 203:2301. PubMed 3. Loyon R, <i>et al.</i> 2016. <i>J Immunol.</i> 197: 85 - 96. PubMed
RRID	AB_1967147 (BioLegend Cat. No. 346706)

Antigen Details

Structure	Type II transmembrane c-type lectin-like receptor, homodimer, 80 kD
Distribution	NK cells, subset of CD8 T and γ/δ T cells
Ligand/Receptor	AICL (activation-induced C-type lectin)
Bioactivity	induce NK cell-mediated cytotoxicity and cytokine release
Cell Type	NK cells, T cells
Biology Area	Costimulatory Molecules, Immunology, Innate Immunity
Antigen References	1. Kuttruff S, <i>et al.</i> 2009. <i>Blood</i> 113:358 2. Vitale M, <i>et al.</i> 2001. <i>Eur. J. Immunol.</i> 31:233
Gene ID	51348

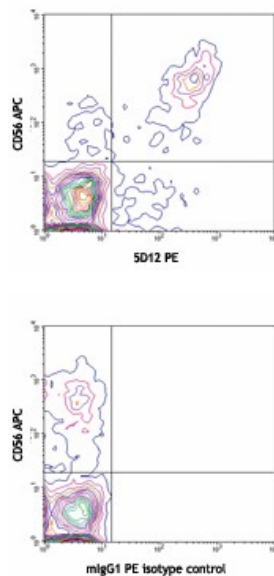
Related Protocols

[Cell Surface Flow Cytometry Staining Protocol](#)

Other Formats

PE anti-human NKp80, APC anti-human NKp80, TotalSeq™-A0923 anti-human NKp80, Ultra-LEAF™ Purified anti-human NKp80

Product Data



Human peripheral blood lymphocytes stained with CD56 (HCD56) APC and 5D12 PE (top) or mouse IgG1, κ PE isotype control (bottom).

For research use only. Not for diagnostic use. Not for resale. BioLegend will not be held responsible for patent infringement or other violations that may occur with the use of our products.

*These products may be covered by one or more Limited Use Label Licenses (see the BioLegend Catalog or our website, www.biolegend.com/ordering#license). BioLegend products may not be transferred to third parties, resold, modified for resale, or used to manufacture commercial products, reverse engineer functionally similar materials, or to provide a service to third parties without written approval of BioLegend. By use of these products you accept the terms and conditions of all applicable Limited Use Label Licenses. Unless otherwise indicated, these products are for research use only and are not intended for human or animal diagnostic, therapeutic or commercial use.

BioLegend Inc., 8999 BioLegend Way, San Diego, CA 92121 www.biolegend.com
Toll-Free Phone: 1-877-Bio-Legend (246-5343) Phone: (858) 768-5800 Fax: (877) 455-9587