

FITC anti-human CD3 Antibody

| | |
|--------------------------|---|
| Catalog# / Size | 317305 / 25 tests 317306 / 100 tests |
| Clone | OKT3 |
| Regulatory Status | RUO |
| Workshop | HCDM listed |
| Other Names | T3, CD3ε |
| Isotype | Mouse IgG2a, κ |
| Description | CD3ε is a 20 kD chain of the CD3/T cell receptor (TCR) complex, which is composed of two CD3ε, one CD3γ, one CD3δ, one CD3ζ (CD247), and a T cell receptor (α/β or γ/δ) heterodimer. It is found on all mature T lymphocytes, NK T cells, and some thymocytes. CD3, also known as T3, is a member of the immunoglobulin superfamily that plays a role in antigen recognition, signal transduction, and T cell activation. |

Product Details

| | |
|-------------------------------|--|
| Verified Reactivity | Human |
| Antibody Type | Monoclonal |
| Host Species | Mouse |
| Formulation | Phosphate-buffered solution, pH 7.2, containing 0.09% sodium azide and BSA (origin USA) |
| Preparation | The antibody was purified by affinity chromatography, and conjugated with FITC under optimal conditions. |
| Concentration | Lot-specific (to obtain lot-specific concentration, please enter the lot number in our Concentration and Expiration Lookup or Certificate of Analysis online tools.) |
| Storage & Handling | The antibody solution should be stored undiluted between 2°C and 8°C, and protected from prolonged exposure to light. Do not freeze. |
| Application | FC - Quality tested |
| Recommended Usage | Each lot of this antibody is quality control tested by immunofluorescent staining with flow cytometric analysis . For flow cytometric staining, the suggested use of this reagent is 5 µl per million cells in 100 µl staining volume or 5 µl per 100 µl of whole blood. |
| Excitation Laser | Blue Laser (488 nm) |
| Application Notes | The OKT3 monoclonal antibody reacts with an epitope on the epsilon-subunit within the human CD3 complex. |

Clone OKT3 can block the binding of clones SK7 and UCHL1.⁴ The OKT3 antibody is able to induce T cell activation. Additional reported applications (for the relevant formats) include: immunohistochemical staining of acetone-fixed frozen sections and activation of T cells. The LEAF™ purified antibody (Endotoxin <0.1 EU/µg, Azide-Free, 0.2 µm filtered) is recommended for functional assays (Cat. No. 317304). For highly sensitive assays, we recommend Ultra-LEAF™ purified antibody (Cat. No. 317326) with a lower endotoxin limit than standard LEAF™ purified antibodies (Endotoxin <0.01 EU/µg).

Application References

(PubMed link indicates BioLegend citation)

- Schlossman S, *et al.* Eds. 1995. Leucocyte Typing V. Oxford University Press. New York.
- Knapp W. 1989. Leucocyte Typing IV. Oxford University Press New York.
- Barclay N, *et al.* 1997. The Leucocyte Antigen Facts Book. Academic Press Inc. San Diego.
- Li B, *et al.* 2005. *Immunology* 116:487.
- Jeong HY, *et al.* 2008. *J. Leucocyte Biol.* 83:755. [PubMed](#)
- Alter G, *et al.* 2008. *J. Virol.* 82:9668. [PubMed](#)
- Manevich-Mendelson E, *et al.* 2009. *Blood* 114:2344. [PubMed](#)
- Pinto JP, *et al.* 2010. *Immunology.* 130:217. [PubMed](#)

9. Biggs MJ, *et al.* 2011. *J. R. Soc. Interface.* 8:1462. [PubMed](#)

Product Citations

1. Zhao B, *et al.* 2013. PLoS One. 8:77708. [PubMed](#)
2. Clayton K, *et al.* 2014. J Immunol. 192:782. [PubMed](#)
3. Fujigaki J, *et al.* 2015. PLoS One. 10: 0132521. [PubMed](#)
4. Guo X, *et al.* 2016. Mol Ther Methods Clin Dev. 3:15054. [PubMed](#)
5. Bal S, *et al.* 2016. Nat Immunol. 10.1038/ni.3444. [PubMed](#)
6. Aagaard K, *et al.* 2017. Sci Rep. 7:41389. [PubMed](#)
7. Shikhagaie M, *et al.* 2017. Cell Rep. 18(7):1761-1773. [PubMed](#)
8. Shi Z, *et al.* 2021. Ann Clin Transl Neurol. 8:43. [PubMed](#)
9. Dai Q, *et al.* 2020. Front Immunol. 11:539654. [PubMed](#)
10. James KR, *et al.* 2020. Nat Immunol. 1.113194444. [PubMed](#)
11. Miyamae Y, *et al.* 2020. Cell Chemical Biology. 27(12):1573-1581.e3. [PubMed](#)
12. Golebski K, *et al.* 2021. Immunity. 54(2):291-307.e7. [PubMed](#)
13. Loo Yau H, *et al.* 2021. STAR Protocols. 2(2):100549. [PubMed](#)
14. Zitti B, *et al.* 2017. Sci Rep. 10.1038/s41598-017-10403-0. [PubMed](#)
15. Giesecke C, *et al.* 2017. Cytometry A. 10.1002/cyto.a.23250. [PubMed](#)
16. Lin L, *et al.* 2018. Oncol Lett. 16:1259. [PubMed](#)
17. Wang Y, *et al.* 2019. J Transl Med. 17:93. [PubMed](#)
18. Want MY, *et al.* 2019. Oncoimmunology. 8:e1586042. [PubMed](#)
19. Gillissen MA, *et al.* 2018. Blood. 131:131. [PubMed](#)
20. Agashe VV, *et al.* 2018. J Immunol. 201:772. [PubMed](#)
21. Sullivan KD *et al.* 2016. eLife. 5 pii: e16220. [PubMed](#)
22. Hazenberg MD, *et al.* 2019. Blood Adv. 2.659722222. [PubMed](#)
23. Catapano M, *et al.* 2020. J Invest Dermatol. 140:816. [PubMed](#)
24. Kim K, *et al.* 2019. Nat Microbiol. 1.586111111. [PubMed](#)
25. Ochi T, *et al.* 2011. Blood. 118:1495. [PubMed](#)

RRID

AB_571906 (BioLegend Cat. No. 317305)
AB_571907 (BioLegend Cat. No. 317306)

Antigen Details

| | |
|---------------------------|---|
| Structure | Ig superfamily, the subunits CD3 γ , CD3 δ , CD3 ζ (CD247) and TCR (α/β or γ/δ) form the CD3/TCR complex, 20 kD |
| Distribution | Mature T and NK T cells, thymocyte differentiation |
| Function | Antigen recognition, signal transduction, T cell activation |
| Ligand/Receptor | Peptide antigen bound to MHC |
| Cell Type | NKT cells, T cells, Thymocytes, Tregs |
| Biology Area | Immunology |
| Molecular Family | CD Molecules |
| Antigen References | <ol style="list-style-type: none">1. Barclay N, <i>et al.</i> 1993. The Leucocyte FactsBook. Academic Press. San Diego.2. Beverly P, <i>et al.</i> 1981. <i>Eur. J. Immunol.</i> 11:329.3. Lanier L, <i>et al.</i> 1986. <i>J. Immunol.</i> 137:2501. |

Gene ID

[916](#)

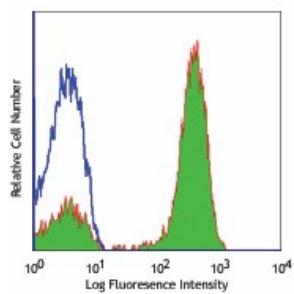
Related Protocols

[Cell Surface Flow Cytometry Staining Protocol](#)

Other Formats

Purified anti-human CD3, FITC anti-human CD3, PE anti-human CD3, Alexa Fluor® 488 anti-human CD3, Alexa Fluor® 647 anti-human CD3, Pacific Blue™ anti-human CD3, APC anti-human CD3, Biotin anti-human CD3, Brilliant Violet 605™ anti-human CD3, Brilliant Violet 650™ anti-human CD3, Ultra-LEAF™ Purified anti-human CD3, Brilliant Violet 711™ anti-human CD3, Brilliant Violet 785™ anti-human CD3, Brilliant Violet 510™ anti-human CD3, PE/Cyanine7 anti-human CD3, PerCP/Cyanine5.5 anti-human CD3, PerCP anti-human CD3, Alexa Fluor® 700 anti-human CD3, APC/Cyanine7 anti-human CD3, Brilliant Violet 421™ anti-human CD3, PE/Dazzle™ 594 anti-human CD3, APC/Fire™ 750 anti-human CD3, GMP Ultra-LEAF™ Purified anti-human CD3 SF, PE/Cyanine5

Product Data



Human peripheral blood lymphocytes
stained with OKT3 FITC

For research use only. Not for diagnostic use. Not for resale. BioLegend will not be held responsible for patent infringement or other violations that may occur with the use of our products.

*These products may be covered by one or more Limited Use Label Licenses (see the BioLegend Catalog or our website, www.biolegend.com/ordering#license). BioLegend products may not be transferred to third parties, resold, modified for resale, or used to manufacture commercial products, reverse engineer functionally similar materials, or to provide a service to third parties without written approval of BioLegend. By use of these products you accept the terms and conditions of all applicable Limited Use Label Licenses. Unless otherwise indicated, these products are for research use only and are not intended for human or animal diagnostic, therapeutic or commercial use.

BioLegend Inc., 8999 BioLegend Way, San Diego, CA 92121 www.biolegend.com
Toll-Free Phone: 1-877-Bio-Legend (246-5343) Phone: (858) 768-5800 Fax: (877) 455-9587