

## Alexa Fluor® 647 anti-human Granulysin Antibody

<b>Catalog# / Size</b>	348006 / 100 tests
<b>Clone</b>	DH2
<b>Regulatory Status</b>	RUO
<b>Other Names</b>	GNLY, 519, LAG2, NKG5, LAG-2, D2S69E, TLA519
<b>Isotype</b>	Mouse IgG1, κ

**Description** Granulysin is a member of the saposin-like protein family of lipid binding proteins (SAPLIP). It is expressed by NK cells and cytolytic T lymphocytes (CTL) as 9 kD and 15 kD forms. The 9 kD form is derived from the 15 kD form by cleavage at both amino- and carboxy-termini. Granulysin has broad cytolytic activities against a variety of tumor cells and microbes, including Gram-positive and -negative bacteria, fungi and parasites. It also functions as a chemoattractant for inflammatory cells and activates the cells expression of cytokines and chemokines.

### Product Details

---

<b>Reactivity</b>	Human
<b>Antibody Type</b>	Monoclonal
<b>Host Species</b>	Mouse
<b>Immunogen</b>	Recombinant 9 kD granulysin
<b>Formulation</b>	Phosphate-buffered solution, pH 7.2, containing 0.09% sodium azide and 0.2% (w/v) BSA (origin USA).
<b>Preparation</b>	The antibody was purified by affinity chromatography and conjugated with Alexa Fluor® 647 under optimal conditions.
<b>Concentration</b>	Lot-specific (to obtain lot-specific concentration, please enter the lot number in our <a href="#">Concentration and Expiration Lookup</a> or <a href="#">Certificate of Analysis</a> online tools.)
<b>Storage &amp; Handling</b>	The antibody solution should be stored undiluted between 2°C and 8°C, and protected from prolonged exposure to light. <b>Do not freeze.</b>
<b>Application</b>	<a href="#">ICFC - Quality tested</a> <a href="#">IHC - Reported in the literature, not verified in house</a>
<b>Recommended Usage</b>	Each lot of this antibody is quality control tested by <a href="#">intracellular immunofluorescent staining with flow cytometric analysis</a> . For flow cytometric staining, the suggested use of this reagent is 5 µl per million cells in 100 µl staining volume or 5 µl per 100 µl of whole blood.  * Alexa Fluor® 647 has a maximum emission of 668 nm when it is excited at 633 nm / 635 nm.  Alexa Fluor® and Pacific Blue™ are trademarks of Life Technologies Corporation.  <a href="#">View full statement regarding label licenses</a>
<b>Excitation Laser</b>	Red Laser (633 nm)
<b>Application Notes</b>	Clone DH2 recognizes both the 9 kD and 15 kD isoforms of Granulysin. <sup>1</sup>

**ELISA Capture:** To measure human granulysin, this antibody can be used as a capture antibody in sandwich ELISA format and paired with the biotinylated DH10 antibody (Cat. No. 526103) as the detection antibody. Recombinant Human Granulysin (ELISA Std.) (Cat. No. 552109) can be used as the protein standard.

**Flow Cytometry:** The fluorochrome-labeled DH2 antibody is useful for intracellular and membrane-bound immunofluorescent staining and flow cytometric analysis to identify granulysin-producing cells within mixed cell populations.

**Note:** For testing human granulysin in serum, plasma or cell culture supernatant, LEGEND MAX™ Human Granulysin ELISA Kit with Pre-coated Plates (Cat. No. 438007 & 438008) are specially

developed and recommended.

#### Application References

(PubMed link indicates BioLegend citation)

1. Hanson DA, *et al.* 1999. *Mol. Immunol.* 36:413.
2. Spada FM, *et al.* 2000. *J. Exp. Med.* 191:937.

RRID

AB\_2110110 (BioLegend Cat. No. 348006)

## Antigen Details

---

<b>Structure</b>	Sapoin-like protein family of lipid binding protein, 9 kD and 15 kD
<b>Distribution</b>	NK cells, cytolytic T cells
<b>Function</b>	Cytolytic against bacteria, fungi, parasite and tumor cells; chemoattract inflammatory cells
<b>Cell Type</b>	NK cells, T cells
<b>Biology Area</b>	Apoptosis/Tumor Suppressors/Cell Death, Cell Biology, Immunology, Innate Immunity
<b>Molecular Family</b>	Cytokines/Chemokines
<b>Antigen References</b>	<ol style="list-style-type: none"><li>1. Krensky AM. 2000. <i>Biochem. Pharmacol.</i> 59:317.</li><li>2. Deng A, <i>et al.</i> 2005. <i>J. Immunol.</i> 174:5243.</li><li>3. Kaspar AA, <i>et al.</i> 2001. <i>J. Immunol.</i> 167:350.</li><li>4. Krensky AM and Clayberger C. 2009. <i>Tissue Antigens</i> 73:193.</li></ol>
<b>Gene ID</b>	<a href="#">10578</a>

## Related Protocols

---

[Intracellular Cytokine Staining Protocol - Video](#)

[Intracellular Flow Cytometry Staining Protocol](#)

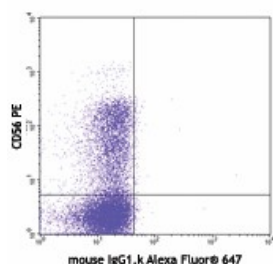
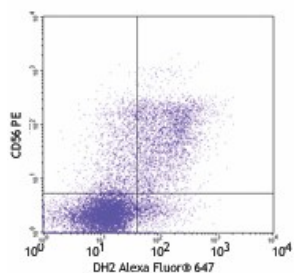
## Other Formats

---

PE anti-human Granulysin, Alexa Fluor® 647 anti-human Granulysin, Purified anti-human Granulysin, APC anti-human Granulysin, PE/Cyanine7 anti-human Granulysin

## Product Data

---



Human peripheral blood lymphocytes surface stained with CD56 PE then intracellularly stained with DH2 Alexa Fluor® 647 (top) or mouse IgG1, κ Alexa Fluor® 647 isotype control (bottom)

For research use only. Not for diagnostic use. Not for resale. BioLegend will not be held responsible for patent infringement or other violations that may occur with the use of our products.

\*These products may be covered by one or more Limited Use Label Licenses (see the BioLegend Catalog or our website, [www.biolegend.com/ordering#license](http://www.biolegend.com/ordering#license)). BioLegend products may not be transferred to third parties, resold, modified for resale, or used to manufacture commercial products, reverse engineer functionally similar materials, or to provide a service to third parties without written approval of BioLegend. By use of these products you accept the terms and conditions of all applicable Limited Use Label Licenses. Unless otherwise indicated, these products are for research use only and are not intended for human or animal diagnostic, therapeutic or commercial use.

BioLegend Inc., 8999 BioLegend Way, San Diego, CA 92121 [www.biolegend.com](http://www.biolegend.com)  
Toll-Free Phone: 1-877-Bio-Legend (246-5343) Phone: (858) 768-5800 Fax: (877) 455-9587