

PE anti-human CXCL5 Antibody

| | |
|--------------------------|---|
| Catalog# / Size | 524103 / 25 tests 524104 / 100 tests |
| Clone | J111B7 |
| Regulatory Status | RUO |
| Other Names | ENA-78, ENA78, epithelial-derived neutrophil-activating protein 78, small inducible cytokine B5 |
| Isotype | Mouse IgG2b, κ |
| Description | CXCL5, also known as ENA-78, is a 11.9 kD chemokine and belongs to the intercrine alpha, CXC chemokine family. It is expressed by monocytes and eosinophils in response to IL-1 and TNF α . CXCL5 can interact with CXCR2 and activate neutrophils and induce their migration. <i>In vitro</i> neutrophil chemotactic activity of CXCL5 is three fold higher. IFN γ suppresses expression of CXCL5. NF κ B alone is sufficient to induce CXCL5 in contrast to IL-8, which requires both NF κ B and C/EBP. Two forms are produced by N terminal proteolytic cleavage, ENA78 (8-78) and ENA 78 (9-78), and these isoforms exhibit higher chemotactic activity. Increased intra-hepatic levels of CXCL5 have been reported in patients with chronic liver disease. |

Product Details

| | |
|-------------------------------|--|
| Verified Reactivity | Human |
| Antibody Type | Monoclonal |
| Host Species | Mouse |
| Immunogen | Recombinant Human CXCL5 (ENA-78) |
| Formulation | Phosphate-buffered solution, pH 7.2, containing 0.09% sodium azide and BSA (origin USA) |
| Preparation | The antibody was purified by affinity chromatography and conjugated with PE under optimal conditions. |
| Concentration | Lot-specific (to obtain lot-specific concentration, please enter the lot number in our Concentration and Expiration Lookup or Certificate of Analysis online tools.) |
| Storage & Handling | The antibody solution should be stored undiluted between 2°C and 8°C, and protected from prolonged exposure to light. Do not freeze. |
| Application | ICFC - Quality tested |
| Recommended Usage | Each lot of this antibody is quality control tested by intracellular immunofluorescent staining with flow cytometric analysis . For flow cytometric staining, the suggested use of this reagent is 5 μ l per million cells in 100 μ l staining volume or 5 μ l per 100 μ l of whole blood. |
| Excitation Laser | Blue Laser (488 nm) Green Laser (532 nm)/Yellow-Green Laser (561 nm) |
| RRID | AB_2562377 (BioLegend Cat. No. 524103) AB_2562378 (BioLegend Cat. No. 524104) |

Antigen Details

| | |
|------------------------|--|
| Structure | CXC chemokine family, 11.9 kD |
| Distribution | Monocytes, platelets, and eosinophils |
| Function | Interacts with CXCR2 and is involved in neutrophil activation and chemotaxis for HIV-1 |
| Ligand/Receptor | CXCR2 |

| | |
|---------------------------|---|
| Cell Type | Monocytes, Platelets, Eosinophils |
| Biology Area | Immunology, Innate Immunity |
| Molecular Family | Cytokines/Chemokines |
| Antigen References | <ol style="list-style-type: none"> 1. Walz A, <i>et al.</i> 1991. <i>J. Exp. Med.</i> 174:1355. 2. Power CA, <i>et al.</i> 1994. <i>Gene.</i> 151:333. 3. Corbett MS, <i>et al.</i> 1994. <i>Biochem. Biophys. Res. Commun.</i> 205:612. |
| Gene ID | 6374 |

Related Protocols

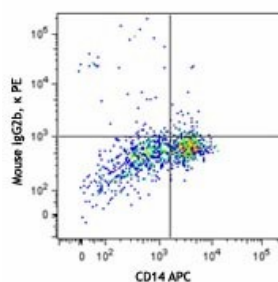
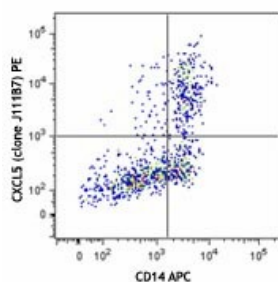
[Intracellular Cytokine Staining Protocol - Video](#)

[Intracellular Flow Cytometry Staining Protocol](#)

Other Formats

PE anti-human CXCL5, APC anti-human CXCL5

Product Data



Human peripheral blood monocytes were stimulated with LPS (overnight, in the presence of monensin), fixed and permeabilized and then stained with CD14 APC (clone HCD14) and CXCL5 (clone J111B7) PE (top) or mouse IgG2b, κ PE isotype control (bottom).

For research use only. Not for diagnostic use. Not for resale. BioLegend will not be held responsible for patent infringement or other violations that may occur with the use of our products.

*These products may be covered by one or more Limited Use Label Licenses (see the BioLegend Catalog or our website, www.biolegend.com/ordering#license). BioLegend products may not be transferred to third parties, resold, modified for resale, or used to manufacture commercial products, reverse engineer functionally similar materials, or to provide a service to third parties without written approval of BioLegend. By use of these products you accept the terms and conditions of all applicable Limited Use Label Licenses. Unless otherwise indicated, these products are for research use only and are not intended for human or animal diagnostic, therapeutic or commercial use.

BioLegend Inc., 8999 BioLegend Way, San Diego, CA 92121 www.biolegend.com
Toll-Free Phone: 1-877-Bio-Legend (246-5343) Phone: (858) 768-5800 Fax: (877) 455-9587