

## APC anti-human CD130 (gp130) Antibody

<b>Catalog# / Size</b>	362005 / 25 tests 362006 / 100 tests
<b>Clone</b>	2E1B02
<b>Regulatory Status</b>	RUO
<b>Other Names</b>	GP130, GP-130, IL6ST, IL-6R $\beta$ , Oncostatin M Receptor, Oncostatin-M receptor subunit alpha
<b>Isotype</b>	Mouse IgG2a, $\kappa$
<b>Description</b>	CD130, also known as gp130 (glycoprotein 130), IL6ST (IL-6-receptor-associated signal transducer), or common $\beta$ chain, is a member of the hematopoietic cytokine receptor family. CD130 is a common subunit associated with the receptors for several cytokines, such as IL-6, IL-11, Oncostatin M (OSM), CNTF (ciliary neurotrophic factor), CT-1, Neuropoietin (NP), and IL-27. CD130 participates in the JAK-STAT signaling pathway and is expressed on T cells, activated B cells, monocytes, plasma cells, and endothelial or epithelial cells.

### Product Details

---

<b>Verified Reactivity</b>	Human
<b>Antibody Type</b>	Monoclonal
<b>Host Species</b>	Mouse
<b>Immunogen</b>	GP130 (23-619aa) recombinant protein
<b>Formulation</b>	Phosphate-buffered solution, pH 7.2, containing 0.09% sodium azide and BSA (origin USA)
<b>Preparation</b>	The antibody was purified by affinity chromatography and conjugated with APC under optimal conditions.
<b>Concentration</b>	Lot-specific (to obtain lot-specific concentration, please enter the lot number in our <a href="#">Concentration and Expiration Lookup</a> or <a href="#">Certificate of Analysis</a> online tools.)
<b>Storage &amp; Handling</b>	The antibody solution should be stored undiluted between 2°C and 8°C, and protected from prolonged exposure to light. <b>Do not freeze.</b>
<b>Application</b>	<a href="#">FC - Quality tested</a>
<b>Recommended Usage</b>	Each lot of this antibody is quality control tested by <a href="#">immunofluorescent staining with flow cytometric analysis</a> . For flow cytometric staining, the suggested use of this reagent is 5 $\mu$ l per million cells in 100 $\mu$ l staining volume or 5 $\mu$ l per 100 $\mu$ l of whole blood.
<b>Excitation Laser</b>	Red Laser (633 nm)
<b>Product Citations</b>	<ol style="list-style-type: none"><li>1. Silvin A, <i>et al.</i> 2020. Cell. 182:1401. <a href="#">PubMed</a></li><li>2. Hara T, <i>et al.</i> 2021. Cancer Cell. 39(6):779-792.e11. <a href="#">PubMed</a></li><li>3. Saga R, <i>et al.</i> 2019. Oncol Lett. 17:3555. <a href="#">PubMed</a></li><li>4. Baryawno N <i>et al.</i> 2019. Cell. 177(7):1915-1932. <a href="#">PubMed</a></li></ol>
<b>RRID</b>	AB_2563403 (BioLegend Cat. No. 362005) AB_2563404 (BioLegend Cat. No. 362006)

### Antigen Details

---

<b>Structure</b>	130 kD type I transmembrane glycoprotein.
<b>Distribution</b>	T cells, activated B cells, monocytes, plasma cells, endothelial cells and epithelial cells.
<b>Function</b>	Common $\beta$ subunit of IL-6 receptor family, plays a role in signal transduction.

<b>Ligand/Receptor</b>	IL-6, IL-11, OSM, CNTF, CT-1, NP, IL-27.
<b>Cell Type</b>	B cells, Endothelial cells, Epithelial cells, Monocytes, Plasma cells, T cells
<b>Biology Area</b>	Immunology
<b>Molecular Family</b>	CD Molecules
<b>Antigen References</b>	<ol style="list-style-type: none"> <li>1. Arzt E, <i>et al.</i> 2001. <i>J. Clin. Invest.</i> 108:1729.</li> <li>2. Bravo J, <i>et al.</i> 2000. <i>EMBO J.</i> 19:2399.</li> <li>3. Wang XJ, <i>et al.</i> 1998. <i>Blood</i> 91:3308.</li> <li>4. Hibi. M, <i>et al.</i> 1990. <i>Cell.</i> 63:1149.</li> <li>5. Schlossman S, <i>et al.</i> 1995. ed. <i>Leukocyte Typing V.</i> New York. Oxford University Press.</li> </ol>
<b>Gene ID</b>	<a href="#">3572</a>

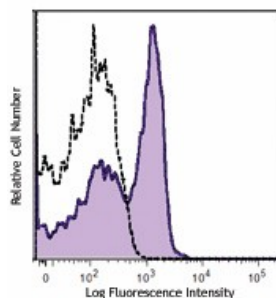
## Related Protocols

[Cell Surface Flow Cytometry Staining Protocol](#)

## Other Formats

Purified anti-human CD130 (gp130), PE anti-human CD130 (gp130), APC anti-human CD130 (gp130), PE/Cyanine7 anti-human CD130 (gp130), PE/Dazzle™ 594 anti-human CD130 (gp130), TotalSeq™-C0820 anti-human CD130 (gp130), TotalSeq™-B0820 anti-human CD130 (gp130)

## Product Data



Human peripheral blood lymphocytes were stained with CD130 (clone 2E1B02) APC (filled histogram) or mouse IgG2a, κ APC isotype control (open histogram).

For research use only. Not for diagnostic use. Not for resale. BioLegend will not be held responsible for patent infringement or other violations that may occur with the use of our products.

\*These products may be covered by one or more Limited Use Label Licenses (see the BioLegend Catalog or our website, [www.biolegend.com/ordering#license](http://www.biolegend.com/ordering#license)). BioLegend products may not be transferred to third parties, resold, modified for resale, or used to manufacture commercial products, reverse engineer functionally similar materials, or to provide a service to third parties without written approval of BioLegend. By use of these products you accept the terms and conditions of all applicable Limited Use Label Licenses. Unless otherwise indicated, these products are for research use only and are not intended for human or animal diagnostic, therapeutic or commercial use.

BioLegend Inc., 8999 BioLegend Way, San Diego, CA 92121 [www.biolegend.com](http://www.biolegend.com)  
Toll-Free Phone: 1-877-Bio-Legend (246-5343) Phone: (858) 768-5800 Fax: (877) 455-9587