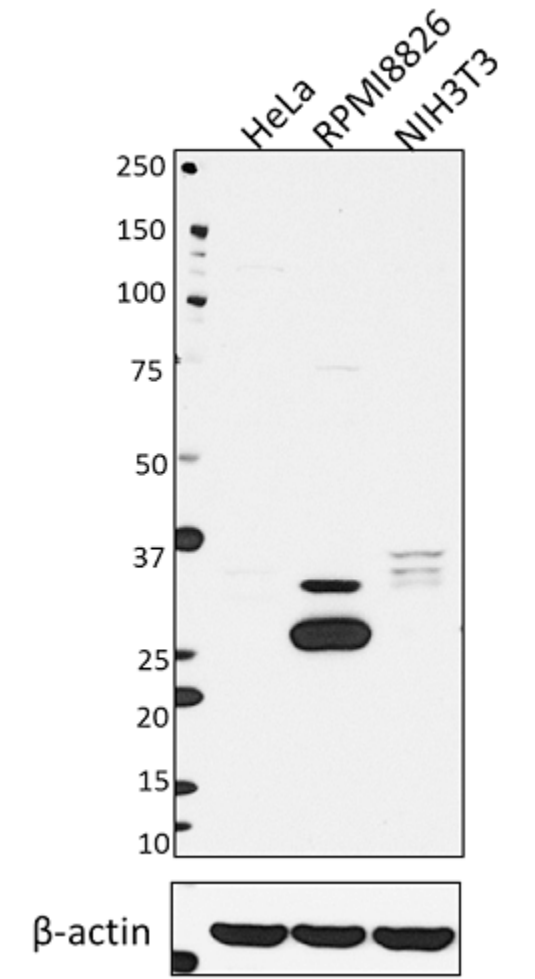


Purified anti-Cyclin D2 Antibody

Total cell lysates (15 μ g protein) from HeLa (negative control cell line), RPMI8826 and NIH3T3 were resolved by 4-20% Tris-glycine gel electrophoresis, transferred to nitrocellulose, and probed with 1 μ g/mL purified anti-Cyclin D2 (clone W15213A) antibody. Proteins were visualized using a goat anti-mouse-IgG secondary antibody conjugated to HRP (clone Poly4053) and chemiluminescence detection. Direct-Blot™ HRP anti- β -actin (clone 2F1-1) antibody was used as a loading control.