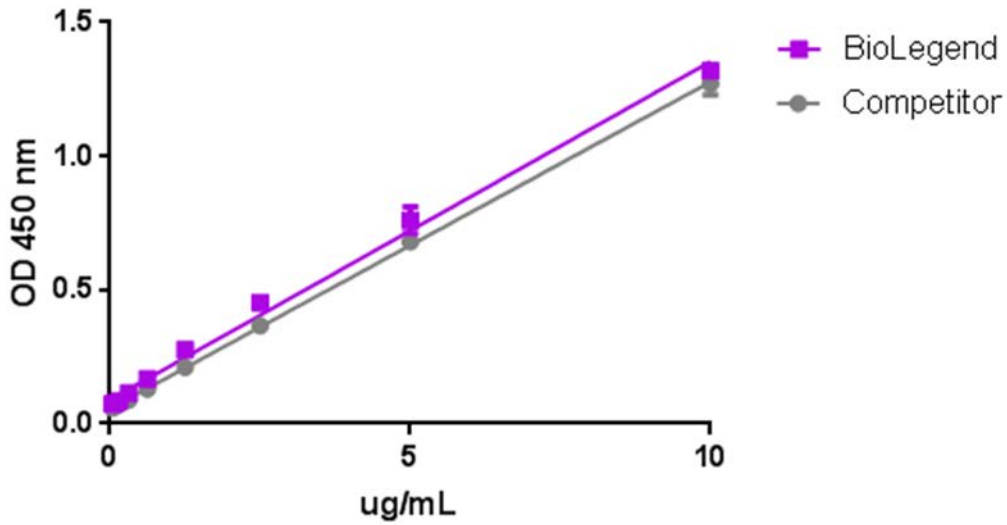


**Recombinant Rat CRP (carrier-free)**



When rat CRP is immobilized at 5  $\mu\text{g}/\text{mL}$ , rat Fc gamma RIIa binds with a linear range of 0.3 – 20  $\mu\text{g}/\text{mL}$ . BioLegend's protein was compared side-by-side to the competitor's equivalent product.