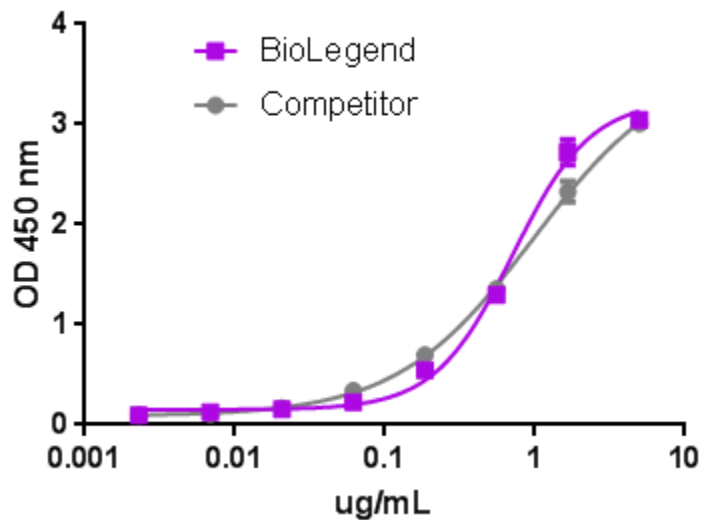


Recombinant Mouse IL-1RL1 (ST2)-Fc Chimera CF



When mouse IL-33 is immobilized at 5 $\mu\text{g/ml}$, mouse IL-1RL1/Fc binds in a dose dependent manner with EC₅₀ of 0.2 – 0.8 $\mu\text{g /mL}$ in a functional ELISA. BioLegend’s protein was compared side-by-side to a competitor’s equivalent product.