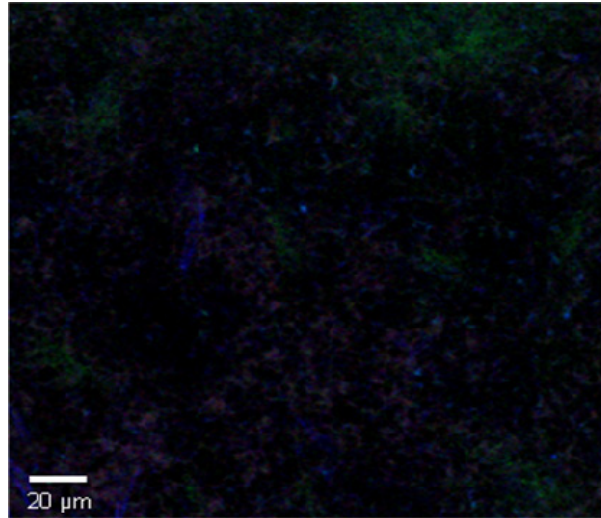
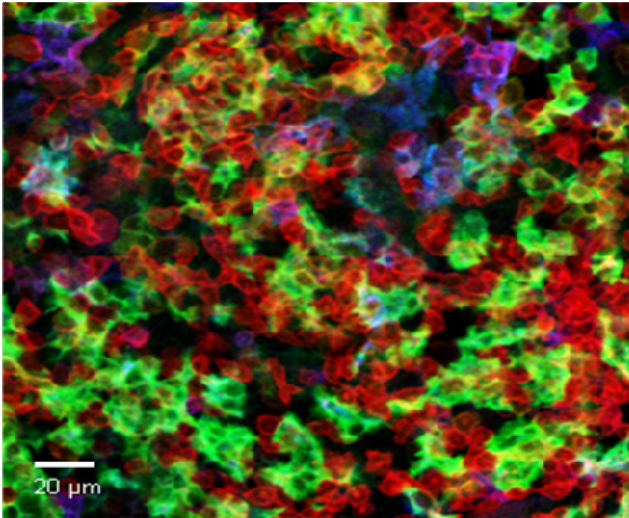
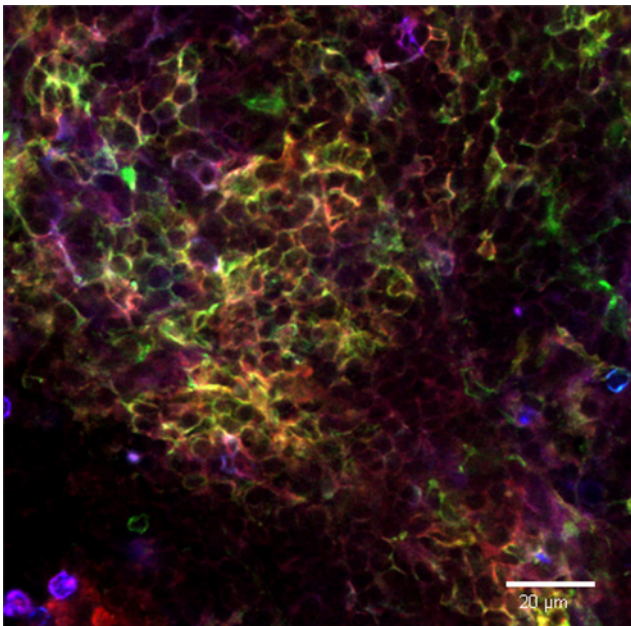


PE anti-mouse/human CD11b Antibody



Live intravital mouse spleen imaging. PE CD11b (red) (clone M1/70), Alexa Fluor® 488 F4/80 (green) (clone BM8), and Alexa Fluor® 647 CD11c (blue) (clone N418) were imaged 30 minutes after *iv* injection of 10 μg per antibody (right image). Isotype controls at the same concentrations, time post injection, and exposure conditions were used for the negative control (left image). Cells were imaged with a Leica SP5 confocal on anesthetized mice. Image courtesy of Grzegorz Chodaczek and Zbigniew Mikulski at LIAI.



Fixed whole mount mouse spleen was stained with FITC CD172a (red) (clone P84), Alexa Fluor® 647 CD11c (yellow) (clone N418), and PE CD11b (blue) (clone M1/70). Isotype controls at the same concentrations were used for the negative control. Cells were mounted in Prolong Gold and imaged with a Leica SP8 confocal. Image courtesy of Grzegorz Chodaczek and Zbigniew Mikulski at LIAI.

