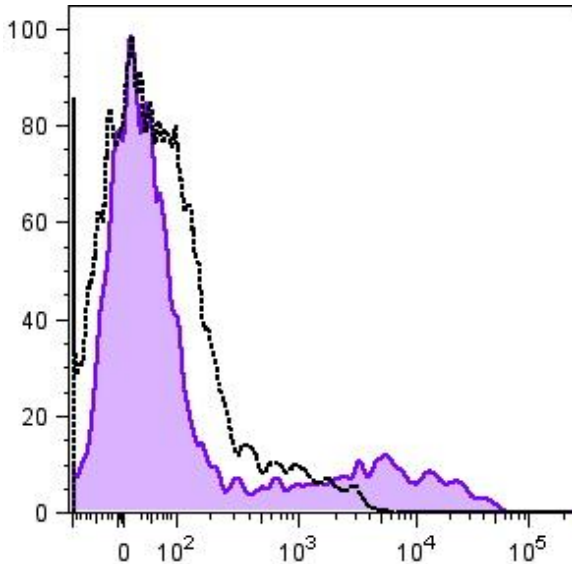
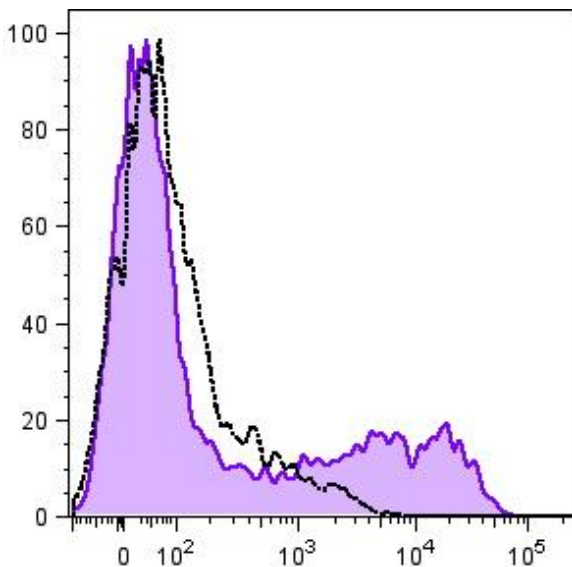


## PE anti-human CD196 (CCR6) Antibody



Cynomolgus monkey peripheral blood lymphocytes were stained with anti-human CD196 (CCR6) PE (clone G034E3) (filled histogram) or mouse IgG2b, k PE isotype control (open histogram).



Rhesus macaque peripheral blood lymphocytes were stained with anti-human CD196 (CCR6) PE (clone G034E3) (filled histogram) or mouse IgG2b, k APC isotype control (open histogram).