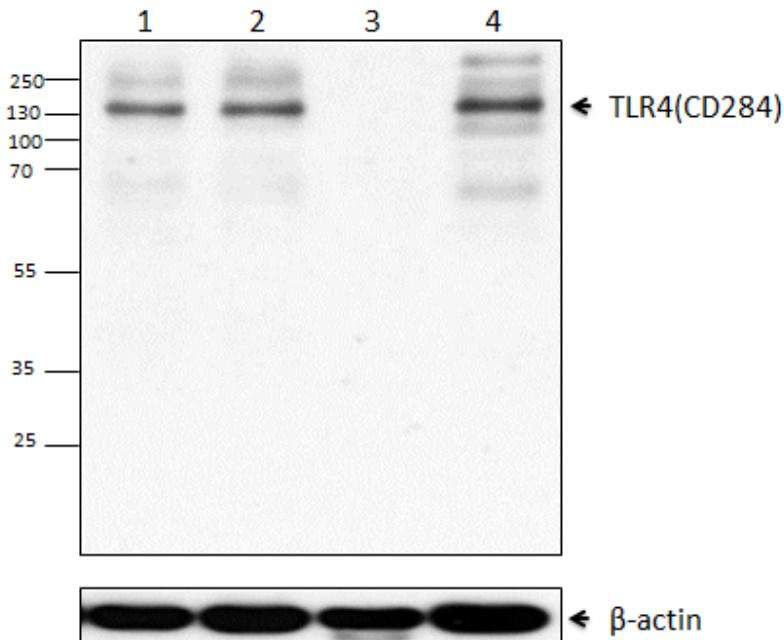


Purified anti-mouse TLR4 (CD284)/MD2 Complex Antibody



Western blot analysis of Raw264.7 untreated (lane 1), Raw264.7 starved overnight and treated with 1 μ g/ml lipopolysaccharide (LPS) for one day (lane 2), peripheral blood mononuclear cells (PBMCs) untreated (lane 3), and PBMCs activated with CD3E (clone OKT3) (10 μ g/ml coated on plate)/CD28 (clone CD28.2) (2 μ g/ml) antibody for two days using anti-mouse TLR4 (CD284)/MD2 Complex (clone MTS510) antibody followed by HRP goat anti-rat IgG antibody. Purified anti- β -actin (clone Poly6221) antibody was used as loading control.