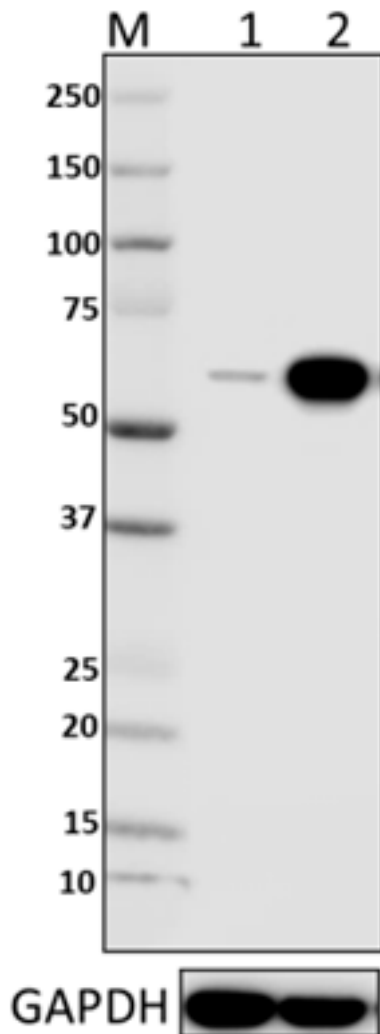
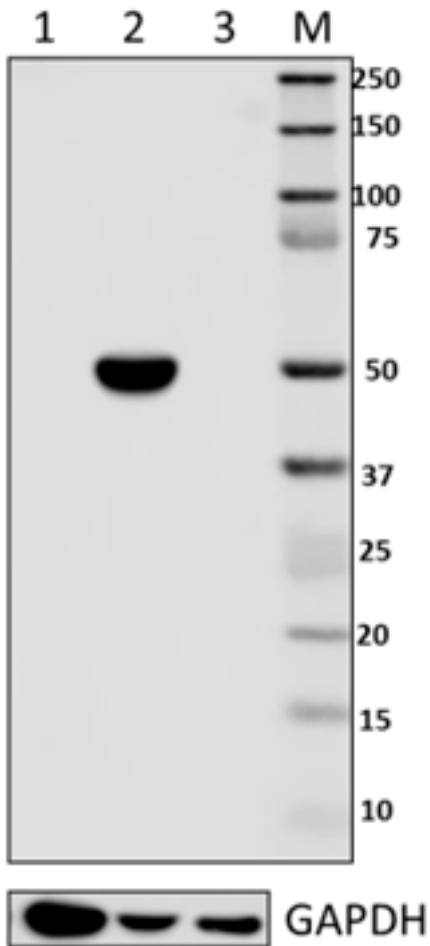


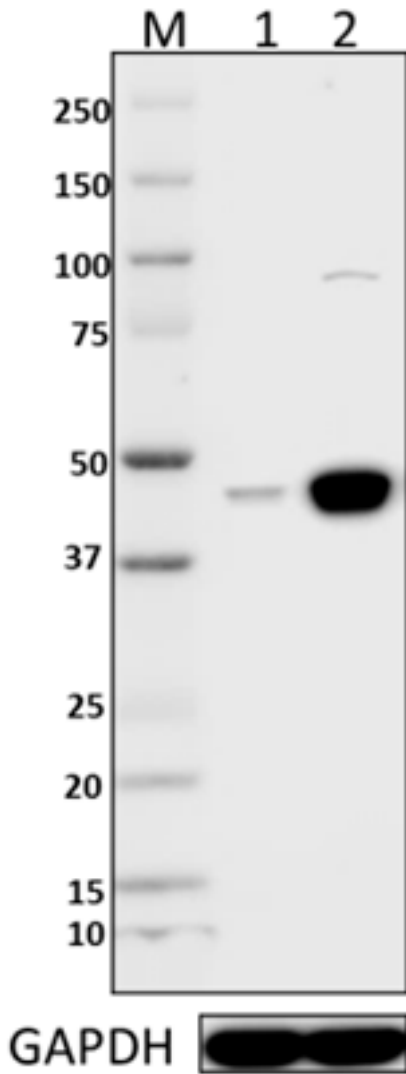
IRF Antibody Sampler Kit



Total lysates (15 μ g protein) from Jurkat (lane 1) and Jurkat treated with 100 ng/mL recombinant human IFN- α cells for 16h (lane 2) were resolved by electrophoresis (4-12% Bis-Tris gel), transferred to nitrocellulose, and probed with 1:2500 diluted (0.2 μ g/mL) purified anti-IRF7 antibody (upper). Proteins were visualized using an HRP goat anti-mouse-IgG secondary antibody (Cat. No. 405306) or HRP Donkey anti-rabbit IgG Antibody (Cat. No. 406401) for GAPDH and chemiluminescence detection. GAPDH (poly6314, Cat. No. 631401) antibody was used as a loading control (lower). Lane M: MW ladder.



Total lysates (15 μ g protein) from HeLa (lane 1), THP-1 (lane 2) and Raw264.7 (lane 3) were resolved by electrophoresis (4-12% Bis-Tris gel), transferred to nitrocellulose, and probed with 1:1000 diluted (0.5 μ g/mL) purified anti-IRF8 antibody (upper). Proteins were visualized using an HRP goat anti-mouse-IgG secondary antibody (Cat. No. 405306) or HRP Donkey anti-rabbit IgG Antibody (Cat. No. 406401) for GAPDH and chemiluminescence detection. GAPDH (poly6314, Cat. No. 631401) antibody was used as a loading control (lower). Lane M: MW ladder.



Total lysates (15 μ g protein) from Jurkat (lane 1) and Jurkat treated with 100 ng/mL recombinant human IFN- α cells for 16h (lane 2) were resolved by electrophoresis (4-12% Bis-Tris gel), transferred to nitrocellulose, and probed with 1:1000 diluted (0.5 μ g/mL) purified anti-IRF9 antibody (upper). Proteins were visualized using an HRP goat anti-mouse-IgG secondary antibody (Cat. No. 405306) or HRP Donkey anti-rabbit IgG Antibody (Cat# 406401) for GAPDH and chemiluminescence detection. GAPDH (poly6314, Cat. No. 631401) antibody was used as a loading control (lower). Lane M: MW ladder.