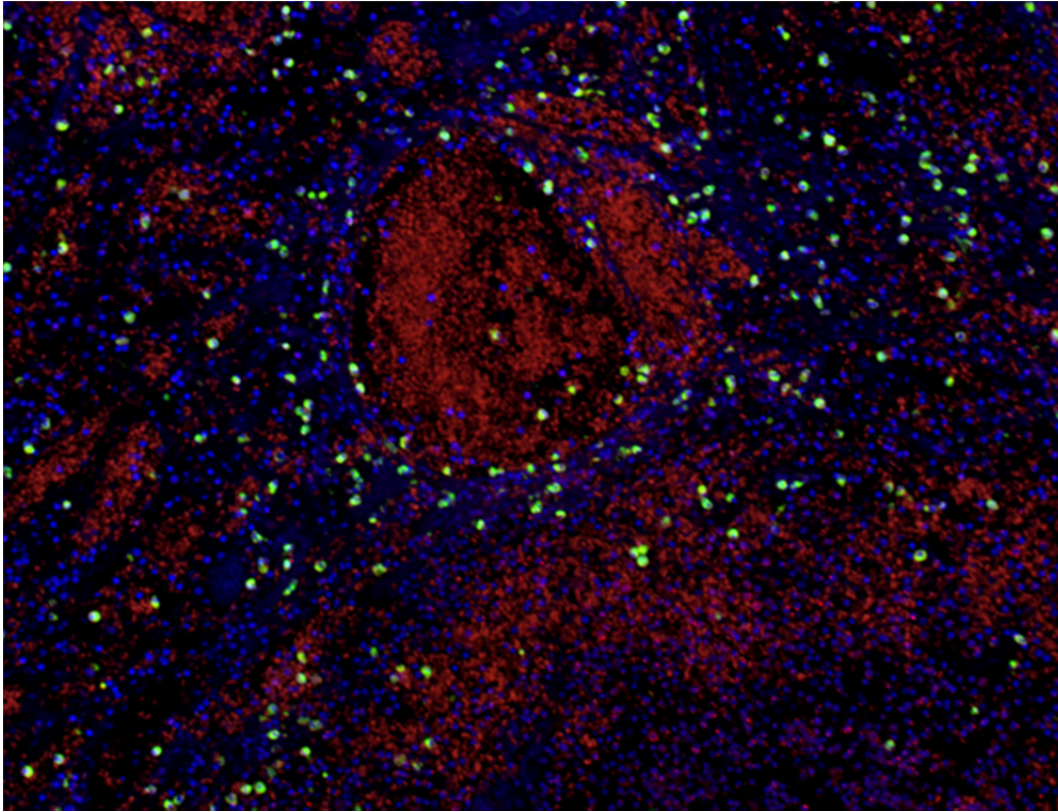


Alexa Fluor® 488 anti-human CD15 (SSEA-1) Antibody



Human paraffin-embedded tonsil tissue slices were prepared with a standard protocol of deparaffination and rehydration. Antigen retrieval was done with Tris-Buffered Saline 20X (1.0M, pH7.4) at 95°C for 40 minutes. Tissue was washed with PBS/ 0.05% Tween20 twice for five minutes and blocked with 5% FBS and 0.2% Gelatin for 30 minutes. Then, the tissue was stained with 5µg/ml of Alexa Fluor® 488 anti-human CD15 (SSEA-1) (green) and anti-human CD44 (clone IM7) Alexa Fluor® 594 (red) 4°C overnight. Nuclei were counterstained with DAPI (blue). The image was captured with a 10X objective.