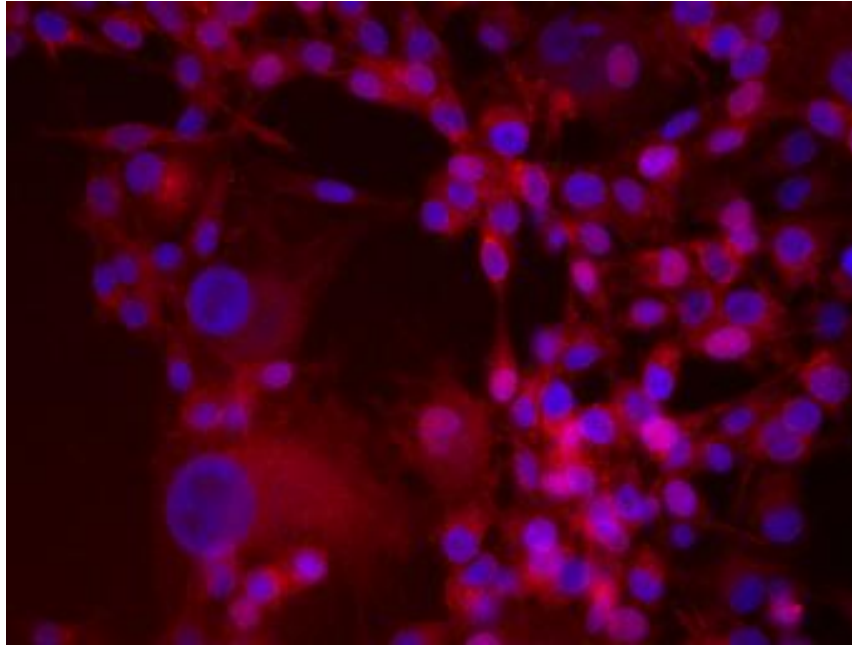


## **Alexa Fluor® 647 anti-human CD61 Antibody**



MDA-MB435 breast cancer cell line stained with 20µg/mL anti-human CD44 Alexa Fluor® 647 and nuclear counterstained with DAPI. Images were acquired with a TE300 fluorescence microscope with a 20x objective.

Data provided by: Er Liu and John Nolan, La Jolla Bioengineering Institute