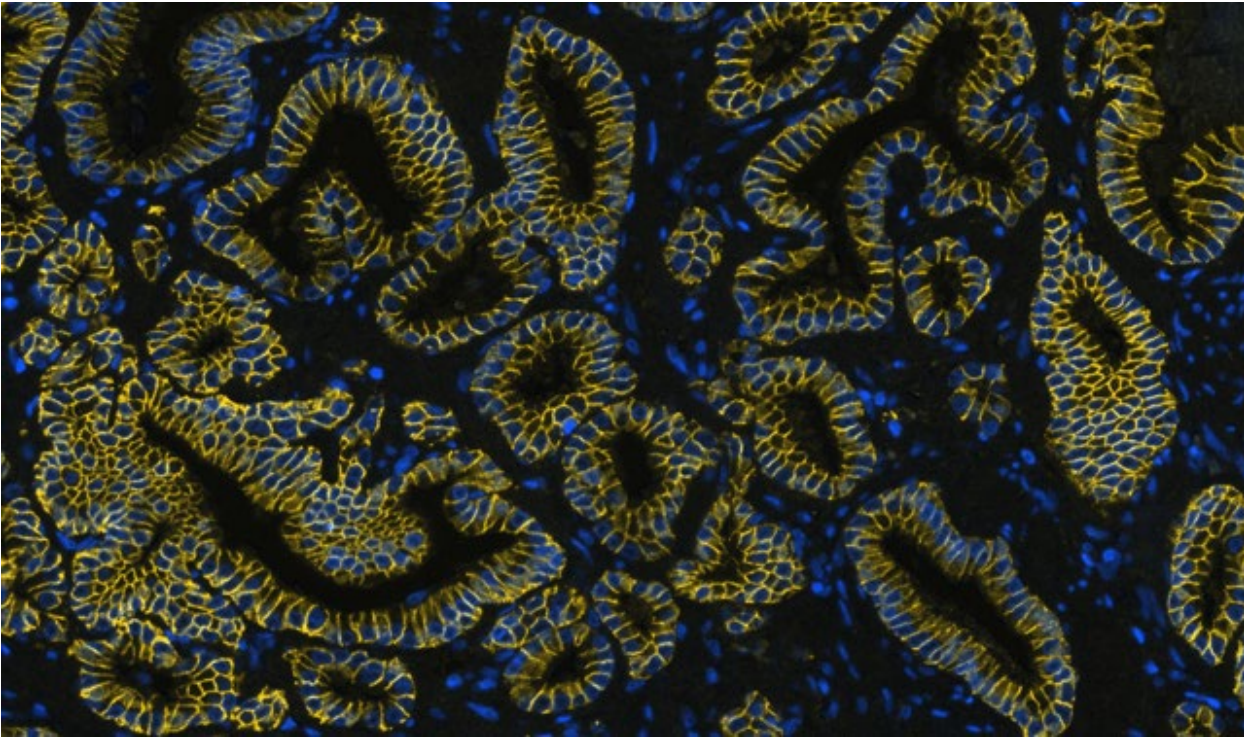


Purified anti-CD324 (E-Cadherin) Antibody



SeqIF[™] (sequential immunofluorescence) staining on COMET[™] of Purified anti-CD324 (E-Cadherin) (clone 4A2, yellow) on formalin-fixed paraffin-embedded human prostate carcinoma tissue at 5 $\mu\text{g}/\text{mL}$. Alexa Fluor[™] Plus 647 Goat anti-Mouse IgG antibody (Lunaphore, Cat. No. DR647MS) was used as a secondary antibody. Nuclei were counterstained with DAPI (blue). Tissue underwent an all-in-one dewaxing and antigen retrieval preprocessing.