

## GMP Pacific Blue™ anti-human CD5 Antibody

<b>Catalog# / Size</b>	260316 / 100 tests
<b>Clone</b>	L17F12
<b>Workshop</b>	II T7
<b>Other Names</b>	Leu-1, Ly-1, T1, Tp67, Leu1
<b>Isotype</b>	Mouse IgG2a, κ
<b>Description</b>	CD5, also known as Leu-1, Ly-1 and T1, is a 67 kD single chain type I glycoprotein that is a member of the scavenger receptor superfamily. CD5 is expressed on T cells, thymocytes, B cell subsets, chronic B lymphocytic leukemia (B-CLL), and peripheral blood dendritic cells. CD5 modulates T and B cell receptor signaling, thymocyte maturation, and T-B cell interactions. One of its ligands is CD72.

### Product Details

<b>Reactivity</b>	Human
<b>Antibody Type</b>	Monoclonal
<b>Host Species</b>	Mouse
<b>Immunogen</b>	Human T-acute lymphoblastic leukemia (ALL) cells
<b>Formulation</b>	Phosphate-buffered solution, pH 7.2, containing 0.09% sodium azide and 0.2% (w/v) BSA (origin USA) and a stabilizer.
<b>Preparation</b>	The antibody was purified by affinity chromatography and conjugated with Pacific Blue™ under optimal conditions.
<b>Concentration</b>	400.0 µg/mL
<b>Storage &amp; Handling</b>	The antibody solution should be stored undiluted between 2°C and 8°C, and protected from prolonged exposure to light. <b>Do not freeze.</b>
<b>Application</b>	<a href="#">FC - Quality tested</a>
<b>Recommended Usage</b>	<p>Each lot of this antibody is quality control tested by <a href="#">immunofluorescent staining with flow cytometric analysis</a>. For flow cytometric staining, the suggested use of this reagent is 5 µL per million cells in 100 µL staining volume or 5 µL per 100 µL of whole blood. It is recommended that the reagent be titrated for optimal performance for each application.</p> <p>* Pacific Blue™ has a maximum emission of 455 nm when it is excited at 405 nm. Prior to using Pacific Blue™ conjugate for flow cytometric analysis, please verify your flow cytometer's capability of exciting and detecting the fluorochrome.</p> <p>Alexa Fluor® and Pacific Blue™ are trademarks of Life Technologies Corporation.</p> <p><a href="#">View full statement regarding label licenses</a></p>
<b>Excitation Laser</b>	Violet Laser (405 nm)
<b>Application Notes</b>	Additional reported applications (for the relevant formats): immunoprecipitation <sup>1,3,4</sup> and immunohistochemical staining of frozen and formalin-fixed paraffin-embedded sections <sup>2,3,5</sup> .
<b>Application References</b>	<ol style="list-style-type: none"> <li>McAlister MS, <i>et al.</i> 1998. <i>Protein Eng.</i> 11:847. (IP)</li> <li>Butmarc JR, <i>et al.</i> 1998. <i>Am. J. Clin. Pathol.</i> 109:682. (IHC)</li> <li>Engleman EG, <i>et al.</i> 1981. <i>Proc. Natl. Acad. Sci. USA</i> 78:1791. (IHC, IP)</li> <li>Ledbetter JA, <i>et al.</i> 1981. <i>J. Exp. Med.</i> 153:310. (FC, IP)</li> <li>Warnke R and Levy R. 1980. <i>J. Histochem. Cytochem.</i> 28:771. (IHC)</li> </ol>
<b>(PubMed link indicates BioLegend citation)</b>	
<b>Disclaimer</b>	<b>GMP RUO Flow Cytometry Antibodies.</b> BioLegend GMP RUO fluorophore conjugated antibodies are manufactured in a dedicated GMP facility and compliant with ISO 13485:2016. For research

use only. Not for use in diagnostic or therapeutic procedures. Our processes include:

- Batch-to-batch consistency
- Material traceability
- Documented procedures
- Documented employee training
- Equipment maintenance and monitoring records
- Lot-specific certificates of analysis
- Quality audits per ISO 13485:2016
- QA review of released products

## Antigen Details

---

<b>Structure</b>	Scavenger receptor superfamily, 67 kD
<b>Distribution</b>	Thymocytes, T cells, and subsets of B and dendritic cells.
<b>Function</b>	Modulates TCR and BCR signaling, involved in thymocyte maturation and T-B cell interaction
<b>Ligand/Receptor</b>	CD72
<b>Cell Type</b>	B cells, Dendritic cells, T cells, Thymocytes
<b>Biology Area</b>	Costimulatory Molecules, Immunology
<b>Molecular Family</b>	CD Molecules
<b>Antigen References</b>	1. Kipps T. 1989. <i>Adv. Immunol.</i> 47:117. 2. Resnick D, <i>et al.</i> 1994. <i>Trends Biochem. Sci.</i> 1:5. 3. Wood GS and Freudenthal PS. 1992. <i>Am. J. Pathol.</i> 141:789.
<b>Gene ID</b>	<a href="#">921</a>

## Related Protocols

---

[Cell Surface Flow Cytometry Staining Protocol](#)

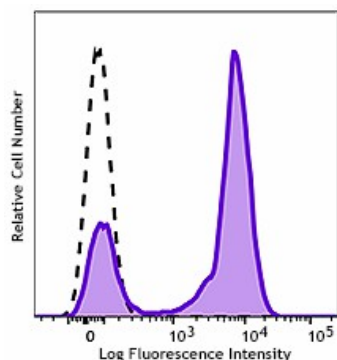
## Other Formats

---

PE/Cyanine7 anti-human CD5, Purified anti-human CD5, Biotin anti-human CD5, PerCP/Cyanine5.5 anti-human CD5, APC/Cyanine7 anti-human CD5, PE/Dazzle™ 594 anti-human CD5, PE anti-human CD5, Brilliant Violet 510™ anti-human CD5, APC anti-human CD5, Brilliant Violet 605™ anti-human CD5, FITC anti-human CD5, Pacific Blue™ anti-human CD5, Alexa Fluor® 700 anti-human CD5, APC/Fire™ 750 anti-human CD5, Brilliant Violet 421™ anti-human CD5, PE/Cyanine5 anti-human CD5, GMP APC anti-human CD5, GMP PE anti-human CD5

## Product Data

---



Typical results from human peripheral blood lymphocytes stained either with L17F12 Pacific Blue™ used at 5 µL/test (filled histogram) or with an isotype control (open histogram).

For research use only. Not for resale. BioLegend will not be held responsible for patent infringement or other violations that may occur with the use of our products.

\*These products may be covered by one or more Limited Use Label Licenses (see the BioLegend Catalog or our website, [www.biolegend.com/ordering#license](http://www.biolegend.com/ordering#license)). BioLegend products may not be transferred to third parties, resold, modified for resale, or used to manufacture commercial products, reverse engineer functionally similar materials, or to provide a service to third parties without written approval of BioLegend. By use of these products you accept the terms and conditions of all applicable Limited Use Label Licenses.

8999 BioLegend Way, San Diego, CA 92121 [www.biolegend.com](http://www.biolegend.com)  
Toll-Free Phone: 1-877-Bio-Legend (246-5343) Phone: (858) 768-5800 Fax: (877) 455-9587