

## GMP FITC anti-human CD11b Antibody

<b>Catalog# / Size</b>	260308 / 100 tests
<b>Clone</b>	ICRF44
<b>Workshop</b>	IV M047
<b>Other Names</b>	Integrin $\alpha_M$ chain, C3biR, CR3, Mac-1, Mo1, ITGAM
<b>Isotype</b>	Mouse IgG1, $\kappa$
<b>Description</b>	CD11b is a 165-170 kD type I transmembrane glycoprotein also known as $\alpha_M$ integrin, Mac-1, CR3, and C3biR. CD11b non-covalently associates with integrin $\beta_2$ (CD18) and is expressed on granulocytes, monocytes/macrophages, dendritic cells, NK cells, and subsets of T and B cells. CD11b/CD18 is critical for the transendothelial migration of monocytes and neutrophils. It is also involved in granulocyte adhesion, phagocytosis, and neutrophil activation. CD11b/CD18 interacts with ICAM-1 (CD54), ICAM-2 (CD102), ICAM-4, CD14, CD23, heparin, iC3b, fibrinogen, and factor X.

### Product Details

<b>Reactivity</b>	Human, Cynomolgus, Rhesus
<b>Reported Reactivity</b>	African Green, Baboon, Chimpanzee, Common Marmoset, Pig
<b>Antibody Type</b>	Monoclonal
<b>Host Species</b>	Mouse
<b>Formulation</b>	Phosphate-buffered solution, pH 7.2, containing 0.09% sodium azide and 0.2% (w/v) BSA (origin USA) and a stabilizer.
<b>Preparation</b>	The antibody was purified by affinity chromatography and conjugated with FITC under optimal conditions.
<b>Concentration</b>	400 $\mu$ g/mL
<b>Storage &amp; Handling</b>	The antibody solution should be stored undiluted between 2°C and 8°C, and protected from prolonged exposure to light. <b>Do not freeze.</b>
<b>Application</b>	<a href="#">FC - Quality tested</a>
<b>Recommended Usage</b>	Each lot of this antibody is quality control tested by <a href="#">immunofluorescent staining with flow cytometric analysis</a> . For flow cytometric staining, the suggested use of this reagent is 5 $\mu$ L per million cells in 100 $\mu$ L staining volume or 5 $\mu$ L per 100 $\mu$ L of whole blood. It is recommended that the reagent be titrated for optimal performance for each application.
<b>Excitation Laser</b>	Blue Laser (488 nm)
<b>Application Notes</b>	The ICRF44 antibody inhibits heterotypic adhesion of granulocytes in response to fMLP. Additional reported applications (for the relevant formats) include: immunohistochemical staining of acetone-fixed frozen tissue sections, immunofluorescence microscopy <sup>5</sup> , stimulation of monocytes <sup>3</sup> , blocking of heterotypic PMN aggregation <sup>8</sup> , and blocking of granulocyte activation <sup>12</sup> . This clone was tested in-house and does not work on formalin fixed paraffin-embedded (FFPE) tissue.  The Ultra-LEAF™ purified antibody (Endotoxin < 0.01 EU/ $\mu$ g, Azide-Free, 0.2 $\mu$ m filtered) is recommended for functional assays (Cat. Nos. 301361 & 301362).

### Application References

(PubMed link indicates BioLegend citation)

- Knapp W. 1989. Leucocyte Typing IV. Oxford University Press New York.
- Barclay N, *et al.* 1997. The Leucocyte Antigen Facts Book. Academic Press Inc. San Diego.
- Rezzonico R, *et al.* 2001. *Blood* 97:2932. (Stim)
- Marsik C, *et al.* 2003. *Shock* 20:493. (FC)
- David A, *et al.* 2003. *J. Leukoc. Biol.* 74:551. (IF)
- Charles N, *et al.* 2010. *Nat. Med.* 16:701. (FC) [PubMed](#)
- Thurlow LR, *et al.* 2010. *Infect. Immun.* 128:1128. (FC) [PubMed](#)
- Jadhav S, *et al.* 2001. *J. Immunol.* 167:5986. (Block)

9. Yoshino N, *et al.* 2000. *Exp. Anim. (Tokyo)* 49:97. (FC)
10. Sestak K, *et al.* 2007. *Vet. Immunol. Immunopathol.* 119:21. (FC)
11. Wen T, *et al.* 2014. *J Immunol.* 192:5481. (FC) [PubMed](#)
12. Sprong T, *et al.* 2003. *Blood* 102:3702. (Block)
13. Cash JL, *et al.* 2013. *EMBO Rep.* 14:999. (FC) [PubMed](#)
14. Larsson K, *et al.* 2015. *PNAS.* [PubMed](#)

#### Disclaimer

**GMP RUO Flow Cytometry Antibodies.** BioLegend GMP RUO fluorophore conjugated antibodies are manufactured in a dedicated GMP facility and compliant with ISO 13485:2016. For research use only. Not for use in diagnostic or therapeutic procedures. Our processes include:

- Batch-to-batch consistency
- Material traceability
- Documented procedures
- Documented employee training
- Equipment maintenance and monitoring records
- Lot-specific certificates of analysis
- Quality audits per ISO 13485:2016
- QA review of released products

## Antigen Details

---

<b>Structure</b>	Integrin, type I transmembrane glycoprotein, associates with integrin $\beta_2$ (CD18), 165-170 kD
<b>Distribution</b>	Granulocytes, monocytes/macrophages, dendritic cells, NK cells, subset of T cells, subset of B cells
<b>Function</b>	Adhesion, phagocytosis, chemotaxis, neutrophil activation
<b>Ligand/Receptor</b>	ICAM-1(CD54), ICAM-2 (CD102), ICAM-4, CD14, CD23, heparin, iC3b, fibrinogen, factor X
<b>Cell Type</b>	B cells, Dendritic cells, Granulocytes, Macrophages, Monocytes, Neutrophils, NK cells, T cells, Tregs
<b>Biology Area</b>	Cell Adhesion, Cell Biology, Costimulatory Molecules, Immunology, Innate Immunity, Neuroscience, Neuroscience Cell Markers
<b>Molecular Family</b>	Adhesion Molecules, CD Molecules
<b>Antigen References</b>	1. Stewart M, <i>et al.</i> 1995. <i>Curr Opin Cell Biol.</i> 7:690.
<b>Gene ID</b>	<a href="#">3684</a>

## Related Protocols

---

[Cell Surface Flow Cytometry Staining Protocol](#)

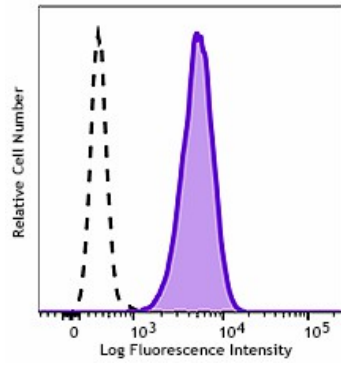
## Other Formats

---

APC anti-human CD11b, Biotin anti-human CD11b, PE anti-human CD11b, PE/Cyanine5 anti-human CD11b, Purified anti-human CD11b, Pacific Blue™ anti-human CD11b, Alexa Fluor® 488 anti-human CD11b, Alexa Fluor® 647 anti-human CD11b, PE/Cyanine7 anti-human CD11b, PerCP/Cyanine5.5 anti-human CD11b, Brilliant Violet 421™ anti-human CD11b, Brilliant Violet 570™ anti-human CD11b, FITC anti-human CD11b, Brilliant Violet 605™ anti-human CD11b, Brilliant Violet 510™ anti-human CD11b, Brilliant Violet 650™ anti-human CD11b, Purified anti-human CD11b (Maxpar® Ready), Alexa Fluor® 594 anti-human CD11b, APC/Cyanine7 anti-human CD11b, Brilliant Violet 711™ anti-human CD11b, Brilliant Violet 785™ anti-human CD11b, PE/Dazzle™ 594 anti-human CD11b, APC/Fire™ 750 anti-human CD11b, TotalSeq™-A0161 anti-human CD11b, Alexa Fluor® 700 anti-human CD11b, TotalSeq™-B0161 anti-human CD11b, TotalSeq™-C0161 anti-human CD11b, Ultra-LEAF™ Purified anti-human CD11b, TotalSeq™-D0161 anti-human CD11b, GMP PE/Cyanine7 anti-human CD11b, GMP PE anti-human CD11b, Spark UV™ 387 anti-human CD11b, GMP PerCP/Cyanine5.5 anti-human CD11b, GMP APC anti-human CD11b

## Product Data

---



Typical results from human peripheral blood Granulocytes stained either with ICRF44 FITC used at 5  $\mu$ L/test (filled histogram) or with an isotype control (open histogram).

For research use only. Not for resale. BioLegend will not be held responsible for patent infringement or other violations that may occur with the use of our products.

\*These products may be covered by one or more Limited Use Label Licenses (see the BioLegend Catalog or our website, [www.biolegend.com/ordering#license](http://www.biolegend.com/ordering#license)). BioLegend products may not be transferred to third parties, resold, modified for resale, or used to manufacture commercial products, reverse engineer functionally similar materials, or to provide a service to third parties without written approval of BioLegend. By use of these products you accept the terms and conditions of all applicable Limited Use Label Licenses.

8999 BioLegend Way, San Diego, CA 92121 [www.biolegend.com](http://www.biolegend.com)  
Toll-Free Phone: 1-877-Bio-Legend (246-5343) Phone: (858) 768-5800 Fax: (877) 455-9587