

## GMP FITC anti-human CD2 Antibody

<b>Catalog# / Size</b>	260252 / 100 tests
<b>Clone</b>	TS1/8
<b>Workshop</b>	V S025
<b>Other Names</b>	LFA-2, T11, SRBC-R
<b>Isotype</b>	Mouse IgG1, $\kappa$
<b>Description</b>	CD2 is a 50 kD type I transmembrane glycoprotein also known as LFA-2, T11, and sheep red blood cell receptor (SRBC-R). This immunoglobulin superfamily member is expressed on thymocytes, T lymphocytes, NK cells, and thymic B cell subsets. The major ligand for CD2 is CD58 (also known as LFA-3). CD2 has also been reported to bind CD48, CD59, and CD15. CD2 plays a critical role in alternative T cell activation, T cell signaling, and cell-cell adhesion.

### Product Details

---

<b>Reactivity</b>	Human
<b>Antibody Type</b>	Monoclonal
<b>Host Species</b>	Mouse
<b>Formulation</b>	Phosphate-buffered solution, pH 7.2, containing 0.09% sodium azide and 0.2% (w/v) BSA (origin USA).
<b>Preparation</b>	The antibody was purified by affinity chromatography and conjugated with FITC under optimal conditions.
<b>Concentration</b>	200 $\mu\text{g}/\text{mL}$
<b>Application</b>	<a href="#">FC - Quality tested</a>
<b>Recommended Usage</b>	Each lot of this antibody is quality control tested by <a href="#">immunofluorescent staining with flow cytometric analysis</a> . For flow cytometric staining, the suggested use of this reagent is 5 $\mu\text{L}$ per million cells in 100 $\mu\text{L}$ staining volume or 5 $\mu\text{L}$ per 100 $\mu\text{L}$ of whole blood. It is recommended that the reagent be titrated for optimal performance for each application.
<b>Excitation Laser</b>	Blue Laser (488 nm)
<b>Application Notes</b>	Additional reported applications (for the relevant formats) include: blocking of T cell activation, and partial blocking of B cell costimulation <sup>2</sup> . The Ultra-LEAF™ purified antibody (Endotoxin < 0.01 EU/ $\mu\text{g}$ , Azide-Free, 0.2 $\mu\text{m}$ filtered) is recommended for functional assays (Cat. Nos. 309235 & 309236).
<b>Application References</b>	1. Schlossman S, et al. Eds. 1995. Leucocyte Typing V Oxford University Press. New York. 2. Hughes CCW, et al. 1996. <i>J. Biol. Chem.</i> 271:5369.
<b>(PubMed link indicates BioLegend citation)</b>	

<b>Disclaimer</b>	<p><b>GMP RUO Flow Cytometry Antibodies.</b> BioLegend GMP RUO fluorophore conjugated antibodies are manufactured in a dedicated GMP facility and compliant with ISO 13485:2016. For research use only. Not for use in diagnostic or therapeutic procedures. Our processes include:</p> <ul style="list-style-type: none"><li>• Batch-to-batch consistency</li><li>• Material traceability</li><li>• Documented procedures</li><li>• Documented employee training</li><li>• Equipment maintenance and monitoring records</li><li>• Lot-specific certificates of analysis</li><li>• Quality audits per ISO 13485:2016</li><li>• QA review of released products</li></ul>
-------------------	---

## Antigen Details

---

<b>Structure</b>	Ig superfamily, type I transmembrane glycoprotein, 50 kD
<b>Distribution</b>	T cells, NK cells, thymocytes, and thymic B cell subsets
<b>Function</b>	T cell activation, adhesion
<b>Ligand/Receptor</b>	CD58 (LFA-3), CD48, CD59, CD15
<b>Cell Type</b>	B cells, NK cells, T cells, Thymocytes
<b>Biology Area</b>	Costimulatory Molecules, Immunology
<b>Molecular Family</b>	CD Molecules
<b>Antigen References</b>	1. Bell G, <i>et al.</i> 1995. <i>J. Immunol.</i> 155:2805. 2. Bierer B, <i>et al.</i> 1989. <i>Annu. Rev. Immunol.</i> 7:579. 3. Moingeon P, <i>et al.</i> 1989. <i>Immunol. Rev.</i> 111:111.
<b>Gene ID</b>	<a href="#">914</a>

## Related Protocols

---

[Cell Surface Flow Cytometry Staining Protocol](#)

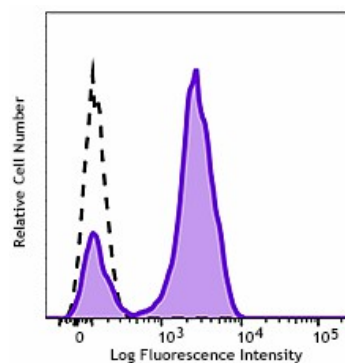
## Other Formats

---

FITC anti-human CD2, PE anti-human CD2, Purified anti-human CD2, Pacific Blue™ anti-human CD2, PE/Cyanine7 anti-human CD2, Brilliant Violet 421™ anti-human CD2, Purified anti-human CD2 (Maxpar® Ready), PerCP/Cyanine5.5 anti-human CD2, APC anti-human CD2, APC/Fire™ 750 anti-human CD2, Alexa Fluor® 700 anti-human CD2, TotalSeq™-A0367 anti-human CD2, TotalSeq™-C0367 anti-human CD2, TotalSeq™-B0367 anti-human CD2, Ultra-LEAF™ Purified anti-human CD2, APC/Cyanine7 anti-human CD2, TotalSeq™-D0367 anti-human CD2, GMP PE anti-human CD2

## Product Data

---



Typical results from human peripheral blood lymphocytes stained either with TS1/8 FITC used at 5 µL/test (solid histogram) or with an isotype control (dashed histogram).

For research use only. Not for resale. BioLegend will not be held responsible for patent infringement or other violations that may occur with the use of our products.

\*These products may be covered by one or more Limited Use Label Licenses (see the BioLegend Catalog or our website, [www.biolegend.com/ordering#license](http://www.biolegend.com/ordering#license)). BioLegend products may not be transferred to third parties, resold, modified for resale, or used to manufacture commercial products, reverse engineer functionally similar materials, or to provide a service to third parties without written approval of BioLegend. By use of these products you accept the terms and conditions of all applicable Limited Use Label Licenses.

BioLegend Inc., 8999 BioLegend Way, San Diego, CA 92121 [www.biolegend.com](http://www.biolegend.com)  
Toll-Free Phone: 1-877-Bio-Legend (246-5343) Phone: (858) 768-5800 Fax: (877) 455-9587