

GMP APC anti-human CD7 Antibody

Catalog# / Size	260080 / 100 tests
Clone	CD7-6B7
Workshop	IV T-164
Other Names	gp40
Isotype	Mouse IgG2a, κ
Description	CD7 is a 40 kD type I transmembrane glycoprotein also known as gp40. It is a member of the immunoglobulin superfamily found on T cells, NK cells, thymocytes, hematopoietic progenitors, and monocytes (weakly). CD7 is also expressed on acute lymphocytic leukemia (ALL) and some acute myeloid leukemia (AML) cells. CD7 crosslinking induces a calcium flux in T lymphocytes, presumably as a result of cytoplasmic domain association with PI3-kinase. CD7 costimulation can induce cytokine secretion and modulate cellular adhesion.

Product Details

Reactivity	Human
Antibody Type	Monoclonal
Host Species	Mouse
Immunogen	KG1a cell line
Formulation	Phosphate-buffered solution, pH 7.2, containing 0.09% sodium azide, 0.2% (w/v) BSA (origin USA) and a stabilizer.
Preparation	The antibody was purified by affinity chromatography, and conjugated with APC under optimal conditions.
Concentration	25 µg/mL
Storage & Handling	The antibody solution should be stored undiluted between 2°C and 8°C, and protected from prolonged exposure to light. Do not freeze.
Application	FC - Quality tested
Recommended Usage	Each lot of this antibody is quality control tested by immunofluorescent staining with flow cytometric analysis . For flow cytometric staining, the suggested use of this reagent is 5 µl per million cells in 100 µl staining volume or 5 µl per 100 µl of whole blood.
Excitation Laser	Red Laser (633 nm)
Application Notes	Additional reported (for the relevant formats) applications include proteogenomics ² .
Application References (PubMed link indicates BioLegend citation)	<ol style="list-style-type: none">Knapp W, et al. 1989. <i>Leucocyte Typing IV: White Cell Differentiation Antigens</i>. Oxford University Press.Peterson VM, et al. 2017. <i>Nat. Biotechnol.</i> 35:936. (PG)
Disclaimer	<p>GMP RUO Flow Cytometry Antibodies. BioLegend GMP RUO fluorophore conjugated antibodies are manufactured in a dedicated GMP facility and compliant with ISO 13485:2016. For research use only. Not for use in diagnostic or therapeutic procedures. Our processes include:</p> <ul style="list-style-type: none">• Batch-to-batch consistency• Material traceability• Documented procedures• Documented employee training• Equipment maintenance and monitoring records• Lot-specific certificates of analysis

- Quality audits per ISO 13485:2016
- QA review of released products

Antigen Details

Structure	Ig superfamily, type I transmembrane glycoprotein, 40 kD
Distribution	T cells, NK cells, thymocytes, hematopoietic progenitors, myeloid leukemic cell subsets
Function	T cell activation
Ligand/Receptor	Cytoplasmic domain associates with P13-kinase
Cell Type	Hematopoietic stem and progenitors, Leukemia, NK cells, T cells, Thymocytes
Biology Area	Costimulatory Molecules, Immunology
Molecular Family	CD Molecules
Antigen References	<ol style="list-style-type: none">1. Barclay N, et al. 1993. The Leucocyte Antigen FactsBook. Academic Press Inc. San Diego.2. Stillwell R, et al. 2001. Immunol. Res. 24:31.3. Rabinowich H, et al. 1994. J. Immunol. 152:517.
Gene ID	924

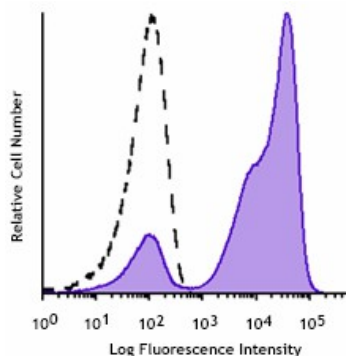
Related Protocols

[Cell Surface Flow Cytometry Staining Protocol](#)

Other Formats

Purified anti-human CD7, FITC anti-human CD7, PE anti-human CD7, APC anti-human CD7, PE/Cyanine5 anti-human CD7, PE/Cyanine7 anti-human CD7, Purified anti-human CD7 (Maxpar® Ready), PerCP/Cyanine5.5 anti-human CD7, PE/Dazzle™ 594 anti-human CD7, APC/Fire™ 750 anti-human CD7, Alexa Fluor® 647 anti-human CD7, TotalSeq™-A0066 anti-human CD7, Alexa Fluor® 700 anti-human CD7, TotalSeq™-C0066 anti-human CD7, TotalSeq™-B0066 anti-human CD7, Pacific Blue™ anti-human CD7 Antibody, TotalSeq™-D0066 anti-human CD7

Product Data



Typical results from human peripheral blood lymphocytes stained either with CD7-6B7 APC used at 5 μ L/test (filled histogram) or with an isotype control (open histogram).

Symbols Glossary*

Symbol	Meaning	Symbol Title	Symbol No.	Symbol	Meaning	Symbol Title	Symbol No.
	Catalog number	Catalogue number	5.1.6		Indicates the need for the user to consult the instructions for use.	Consult instructions for use	5.4.3
	Indicates the temperature limits to which the medical device can be safely exposed.	Temperature limit	5.3.7		Indicates a medical device that needs protection from light sources.	Keep away from sunlight	5.3.2
	Indicates the upper limit of temperature to which the medical device can be safely exposed.	Upper limit of temperature	5.3.6		Indicates the date after which the medical device is not to be used.	Use-by date	5.1.4
	Indicates the medical device manufacturer.	Manufacturer	5.1.1		Indicates the authorized representative in the European Community.	Authorized representative in the European Community	5.1.2
	Indicates the manufacturer's batch code so that the batch or lot can be identified.	Batch code	5.1.5		Indicates a medical device that is intended to be used as an in vitro diagnostic medical device.	<i>In vitro</i> diagnostic medical device	5.5.1

* Symbol information is from EN ISO 15223-1:2016 Medical devices – Symbols to be used with medical device labels, labelling and information to be supplied – Part 1: General requirements

For research use only. Not for resale. BioLegend will not be held responsible for patent infringement or other violations that may occur with the use of our products.

*These products may be covered by one or more Limited Use Label Licenses (see the BioLegend Catalog or our website, www.biolegend.com/ordering#license). BioLegend products may not be transferred to third parties, resold, modified for resale, or used to manufacture commercial products, reverse engineer functionally similar materials, or to provide a service to third parties without written approval of BioLegend. By use of these products you accept the terms and conditions of all applicable Limited Use Label Licenses.

BioLegend Inc., 8999 BioLegend Way, San Diego, CA 92121 www.biolegend.com
 Toll-Free Phone: 1-877-Bio-Legend (246-5343) Phone: (858) 768-5800 Fax: (877) 455-9587