

GMP PE anti-human CD38 Antibody

Catalog# / Size	260062 / 100 tests
Clone	HIT2
Workshop	III 155
Other Names	T10, ADP-ribosyl cyclase
Isotype	Mouse IgG1, κ
Description	CD38 is a 45 kD type II transmembrane glycoprotein also known as T10. It is an ADP-ribosyl hydrolase expressed at variable levels on hematopoietic cells and in some non-hematopoietic tissues (such as brain, muscles, and kidney). In humans, it is expressed at high levels on plasma cells and activated T and B cells. By functioning as both a cyclase and a hydrolase, CD38 mediates lymphocyte activation, adhesion, and the metabolism of cADPR and NAADP. CD31 is the ligand of CD38.

Product Details

Reactivity	Human
Antibody Type	Monoclonal
Host Species	Mouse
Formulation	Phosphate-buffered solution, pH 7.2, containing 0.09% sodium azide and 0.2% (w/v) BSA (origin USA).
Preparation	The antibody was purified by affinity chromatography and conjugated with PE under optimal conditions.
Concentration	100 μ g/mL
Storage & Handling	The antibody solution should be stored undiluted between 2°C and 8°C, and protected from prolonged exposure to light. Do not freeze.
Application	FC - Quality tested
Recommended Usage	Each lot of this antibody is quality control tested by immunofluorescent staining with flow cytometric analysis . For flow cytometric staining, the suggested use of this reagent is 5 μ L per million cells in 100 μ L staining volume or 5 μ L per 100 μ L of whole blood. It is recommended that the reagent be titrated for optimal performance for each application.
Excitation Laser	Blue Laser (488 nm) Green Laser (532 nm)/Yellow-Green Laser (561 nm)
Application Notes	Additional reported applications (for the relevant formats) include: immunohistochemical staining of acetone-fixed frozen tissue sections. ⁶
Application References	<ol style="list-style-type: none"> 1. Kishimoto T, <i>et al.</i> Eds. 1997. Leucocyte Typing VI. Garland Publishing Inc. London. 2. Dieu M. 1998. <i>J. Exp. Med.</i> 188:373. 3. Esser M, <i>et al.</i> 2001. <i>J. Virol.</i> 75:6173. 4. Jeannin P, <i>et al.</i> 1999. <i>J. Immunol.</i> 162:2044. 5. Kapsogeorgou EK, <i>et al.</i> 2001. <i>J. Immunol.</i> 166:3107. 6. van der Voort R, <i>et al.</i> 1997. <i>J. Exp. Med.</i> 185:2121. (IHC) 7. Bende RJ, <i>et al.</i> 2003. <i>Am. J. Pathol.</i> 162:105. 8. Lehner M, <i>et al.</i> 2008. <i>J. Leukoc. Biol.</i> 83:883. PubMed 9. Yoshino N, <i>et al.</i> 2000. <i>Exp. Anim. (Tokyo)</i> 49:97. (FC)
Disclaimer	GMP RUO Flow Cytometry Antibodies. BioLegend GMP RUO fluorophore conjugated antibodies are manufactured in a dedicated GMP facility and compliant with ISO 13485:2016. For research use only. Not for use in diagnostic or therapeutic procedures. Our processes include:

- Batch-to-batch consistency
- Material traceability
- Documented procedures
- Documented employee training
- Equipment maintenance and monitoring records
- Lot-specific certificates of analysis
- Quality audits per ISO 13485:2016
- QA review of released products

Antigen Details

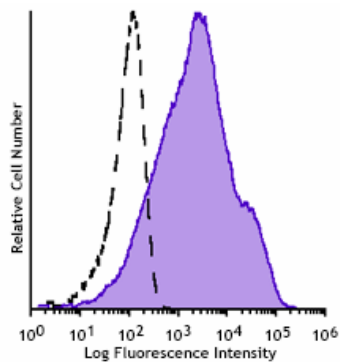
Structure	ADP-ribosyl cyclase, ectoenzyme, type II glycoprotein, 45 kD
Distribution	T cells, B cells, NK, myeloid, plasma, and dendritic cells
Function	Ecto-ADP-ribosyl cyclase, calcium signaling, cell activation
Ligand/Receptor	CD31, hyaluronic acid
Cell Type	B cells, Dendritic cells, NK cells, Plasma cells, T cells
Biology Area	Immunology
Molecular Family	Adhesion Molecules, CD Molecules
Antigen References	<ol style="list-style-type: none"> 1. Ferrero E, <i>et al.</i> 1999. <i>J Leukoc Biol.</i> 65:151-61. 2. Lund F, <i>et al.</i> 1995. <i>Immunol Today.</i> 16:469-73.
Gene ID	952

Related Protocols

[Cell Surface Flow Cytometry Staining Protocol](#)

Other Formats

APC anti-human CD38, FITC anti-human CD38, PE anti-human CD38, PE/Cyanine5 anti-human CD38, Purified anti-human CD38, Alexa Fluor® 488 anti-human CD38, Alexa Fluor® 647 anti-human CD38, PE/Cyanine7 anti-human CD38, Biotin anti-human CD38, PerCP anti-human CD38, PerCP/Cyanine5.5 anti-human CD38, Alexa Fluor® 700 anti-human CD38, Brilliant Violet 421™ anti-human CD38, Brilliant Violet 711™ anti-human CD38, Brilliant Violet 785™ anti-human CD38, Brilliant Violet 605™ anti-human CD38, APC/Cyanine7 anti-human CD38, Purified anti-human CD38 (Maxpar® Ready), PE/Dazzle™ 594 anti-human CD38, Brilliant Violet 510™ anti-human CD38, TotalSeq™-A0389 anti-human CD38, TotalSeq™-C0389 anti-human CD38, APC/Fire™ 750 anti-human CD38, TotalSeq™-B0389 anti-human CD38, APC/Fire™ 810 anti-human CD38, Spark NIR™ 685 anti-human CD38 Antibody, TotalSeq™-D0389 anti-human CD38



Typical results from human peripheral blood lymphocytes stained either with HIT2 PE at 5 µL/test (solid line) or with an isotype control (dotted line).

Symbols Glossary*

Symbol	Meaning	Symbol Title	Symbol No.	Symbol	Meaning	Symbol Title	Symbol No.
	Catalog number	Catalogue number	5.1.6		Indicates the need for the user to consult the instructions for use.	Consult instructions for use	5.4.3
	Indicates the temperature limits to which the medical device can be safely exposed.	Temperature limit	5.3.7		Indicates a medical device that needs protection from light sources.	Keep away from sunlight	5.3.2
	Indicates the upper limit of temperature to which the medical device can be safely exposed.	Upper limit of temperature	5.3.6		Indicates the date after which the medical device is not to be used.	Use-by date	5.1.4
	Indicates the medical device manufacturer.	Manufacturer	5.1.1		Indicates the authorized representative in the European Community.	Authorized representative in the European Community	5.1.2
	Indicates the manufacturer's batch code so that the batch or lot can be identified.	Batch code	5.1.5		Indicates a medical device that is intended to be used as an in vitro diagnostic medical device.	<i>In vitro</i> diagnostic medical device	5.5.1

* Symbol information is from EN ISO 15223-1:2016 Medical devices – Symbols to be used with medical device labels, labelling and information to be supplied – Part 1: General requirements

For research use only. Not for resale. BioLegend will not be held responsible for patent infringement or other violations that may occur with the use of our products.

*These products may be covered by one or more Limited Use Label Licenses (see the BioLegend Catalog or our website, www.biolegend.com/ordering#license). BioLegend products may not be transferred to third parties, resold, modified for resale, or used to manufacture commercial products, reverse engineer functionally similar materials, or to provide a service to third parties without written approval of BioLegend. By use of these products you accept the terms and conditions of all applicable Limited Use Label Licenses.

BioLegend Inc., 8999 BioLegend Way, San Diego, CA 92121 www.biolegend.com
 Toll-Free Phone: 1-877-Bio-Legend (246-5343) Phone: (858) 768-5800 Fax: (877) 455-9587