

GMP FITC anti-human HLA-DR Antibody

Catalog# / Size	260054 / 100 tests
Clone	L243
Other Names	Major Histocompatibility Class II, MHC class II
Isotype	Mouse IgG2a, κ
Description	HLA-DR is a heterodimeric cell surface glycoprotein comprised of a 36 kD α (heavy) chain and a 27 kD β (light) chain. It is expressed on B cells, activated T cells, monocytes/macrophages, dendritic cells, and other non-professional APCs. In conjunction with the CD3/TCR complex and CD4 molecules, HLA-DR is critical for efficient peptide presentation to CD4 ⁺ T cells.

Product Details

Reactivity	Human
Antibody Type	Monoclonal
Host Species	Mouse
Formulation	Phosphate-buffered solution, pH 7.2, containing 0.09% sodium azide and 0.2% (w/v) BSA (origin USA).
Preparation	The antibody was purified by affinity chromatography and conjugated with FITC under optimal conditions.
Concentration	200 μ g/mL
Storage & Handling	The antibody solution should be stored undiluted between 2°C and 8°C, and protected from prolonged exposure to light. Do not freeze.
Application	FC- Quality tested
Recommended Usage	Each lot of this antibody is quality control tested by immunofluorescent staining with flow cytometric analysis . For flow cytometric staining, the suggested use of this reagent is 5 μ L per million cells in 100 μ L staining volume or 5 μ L per 100 μ L of whole blood. It is recommended that the reagent be titrated for optimal performance for each application.
Excitation Laser	Blue Laser (488 nm)
Application Notes	The L243 monoclonal antibody reacts with the HLA-DR antigen, a member of MHC class II molecules. It does not cross react with HLA-DP and HLA-DQ. Clone L243 binds a conformational epitope on HLA-DRA which depends on the correct folding of the $\alpha\beta$ heterodimer. ¹⁹ Additional reported applications (for the relevant formats) include: immunoprecipitation ⁸ , Western blotting ⁸ , <i>in vitro</i> blocking of mixed lymphocyte reactions ^{9,10} , depletion of MHC class II cells ⁷ , and immunohistochemical staining of acetone-fixed frozen sections ^{4,5} . For sensitive functional assays, we recommend using the Ultra-LEAF [™] purified antibody (Endotoxin < 0.01 EU/ μ g, Azide-Free, 0.2 μ m filtered) (Cat. No. 307648, 307665 - 307669).

Application References

(PubMed link indicates BioLegend citation)

1. Brodsky F. 1984. *Immunogenetics* 19:179.
2. Robbins P, et al. 1987. *Human Immunol.* 18:301.
3. Stites D, et al. 1986. *Clin. Immunol. Immunopathol.* 38:161.
4. Warnke R, et al. 1980. *J. Histochem. Cytochem.* 28:771. (IHC)
5. Engleman E, et al. 1981. *P. Natl. Acad. Sci. USA* 78:1791. (IHC)
6. Zipf T, et al. 1981. *Cancer Res.* 41:4786.
7. Goodier M, et al. 2000. *J. Immunol.* 165:139. (Depletion)
8. Esser M, et al. 2001. *J. Virol.* 75:6173. (IP, WB)
9. Kalka-Moll WM, et al. 2002. *J. Immunol.* 169:6149. (Block)
10. Wang RF, et al. 1999. *Science* 284:1351. (Block)
11. Zaba LC, et al. 2007. *J. Exp. Med.* 204:3183. [PubMed](#)

12. Fujita H, *et al.* 2009. *P. Natl. Acad. Sci. USA* 106:21795. [PubMed](#)
13. Charles N, *et al.* 2010. *Nat. Med.* 16:701. (FC) [PubMed](#)
14. Goncalves RM, *et al.* 2010. *Infect. Immun.* 78:4763. [PubMed](#)
15. Yoshino N, *et al.* 2000. *Exp. Anim. (Tokyo)* 49:97. (FC)
16. Kim WK, *et al.* 2006. *Am. J. Pathol.* 168:822. (FC)
17. Stein R, *et al.* 2011. *Leuk. Lymphoma* 52:273.
18. Galkowska H, *et al.* 1996. *Vet. Immunol. Immunopathol.* 53:329.
19. Moro M, *et al.* 2005. *BMC Immunol.* 6:24.
20. Lauterbach N, *et al.* 2014. *Mol Immunol.* 59:19. [PubMed](#)

Disclaimer

GMP RUO Flow Cytometry Antibodies. BioLegend GMP RUO fluorophore conjugated antibodies are manufactured in a dedicated GMP facility and compliant with ISO 13485:2016. For research use only. Not for use in diagnostic or therapeutic procedures. Our processes include:

- Batch-to-batch consistency
- Material traceability
- Documented procedures
- Documented employee training
- Equipment maintenance and monitoring records
- Lot-specific certificates of analysis
- Quality audits per ISO 13485:2016
- QA review of released products

Antigen Details

Structure	Ig superfamily, MHC class II, heterodimeric transmembrane protein, 36 kD heavy and 27 kD light chain
Distribution	B cells, activated T cells, monocytes/macrophages, dendritic cells, other APCs
Function	Peptide presentation
Ligand/Receptor	CD3/TCR, CD4
Cell Type	Antigen-presenting cells, B cells, Dendritic cells, Macrophages, Monocytes, T cells, Tregs
Biology Area	Immunology, Innate Immunity
Molecular Family	MHC Antigens
Antigen References	<ol style="list-style-type: none"> 1. Levacher M, <i>et al.</i> 1990. <i>Clin. Exp. Immunol.</i> 81:177. 2. Terstappen L, <i>et al.</i> 1990. <i>J. Leukocyte Biol.</i> 48:138. 3. Edwards JA, <i>et al.</i> 1986. <i>J. Immunol.</i> 137:490. 4. van Es A, <i>et al.</i> 1984. <i>Transplantation</i> 37:65. 5. O'Doherty U, <i>et al.</i> 1994. <i>Immunology</i> 82:487. 6. Thomas R, <i>et al.</i> 1994. <i>J. Immunol.</i> 153:4016. 7. Grouard G, <i>et al.</i> 1996. <i>Nature</i> 384:364.
Gene ID	3122 3123

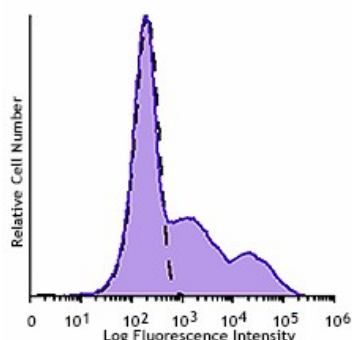
Related Protocols

[Cell Surface Flow Cytometry Staining Protocol](#)

Other Formats

APC anti-human HLA-DR, FITC anti-human HLA-DR, PE anti-human HLA-DR, PE/Cyanine5 anti-human HLA-DR, Purified anti-human HLA-DR, Biotin anti-human HLA-DR, PE/Cyanine7 anti-human HLA-DR, APC/Cyanine7 anti-human HLA-DR, Alexa Fluor® 488 anti-human HLA-DR, Alexa Fluor® 647 anti-human HLA-DR, Pacific Blue™ anti-human HLA-DR, Alexa Fluor® 700 anti-human HLA-DR, PerCP anti-human HLA-DR, PerCP/Cyanine5.5 anti-human HLA-DR, Brilliant Violet 605™ anti-human HLA-DR, Brilliant Violet 421™ anti-human HLA-DR, Brilliant Violet 570™ anti-human HLA-DR, Brilliant Violet 711™ anti-human HLA-DR, Brilliant Violet 785™ anti-human HLA-DR, Brilliant Violet 510™ anti-human HLA-DR, Ultra-LEAF™ Purified anti-human HLA-DR, Brilliant Violet 650™ anti-human HLA-DR, Purified anti-human HLA-DR (Maxpar® Ready), PE/Dazzle™ 594 anti-human HLA-DR, APC/Fire™ 750 anti-human HLA-DR, TotalSeq™-A0159 anti-human HLA-DR, TotalSeq™-B0159 anti-human HLA-DR, TotalSeq™-C0159 anti-human HLA-DR, Brilliant Violet 750™ anti-human HLA-DR, APC/Fire™ 810 anti-human HLA-DR, PE/Fire™ 640 anti-human HLA-DR,

Product Data



Typical results from human peripheral blood lymphocytes stained either with L243 FITC used at 5 µL/test (solid histogram) or with isotype control (open histogram).

Symbols Glossary*

Symbol	Meaning	Symbol Title	Symbol No.	Symbol	Meaning	Symbol Title	Symbol No.
	Catalog number	Catalogue number	5.1.6		Indicates the need for the user to consult the instructions for use.	Consult instructions for use	5.4.3
	Indicates the temperature limits to which the medical device can be safely exposed.	Temperature limit	5.3.7		Indicates a medical device that needs protection from light sources.	Keep away from sunlight	5.3.2
	Indicates the upper limit of temperature to which the medical device can be safely exposed.	Upper limit of temperature	5.3.6		Indicates the date after which the medical device is not to be used.	Use-by date	5.1.4
	Indicates the medical device manufacturer.	Manufacturer	5.1.1		Indicates the authorized representative in the European Community.	Authorized representative in the European Community	5.1.2
	Indicates the manufacturer's batch code so that the batch or lot can be identified.	Batch code	5.1.5		Indicates a medical device that is intended to be used as an in vitro diagnostic medical device.	<i>In vitro</i> diagnostic medical device	5.5.1

* Symbol information is from EN ISO 15223-1:2016 Medical devices – Symbols to be used with medical device labels, labelling and information to be supplied – Part 1: General requirements

For research use only. Not for resale. BioLegend will not be held responsible for patent infringement or other violations that may occur with the use of our products.

*These products may be covered by one or more Limited Use Label Licenses (see the BioLegend Catalog or our website, www.biolegend.com/ordering#license). BioLegend products may not be transferred to third parties, resold, modified for resale, or used to manufacture commercial products, reverse engineer functionally similar materials, or to provide a service to third parties without written approval of BioLegend. By use of these products you accept the terms and conditions of all applicable Limited Use Label Licenses.

BioLegend Inc., 8999 BioLegend Way, San Diego, CA 92121 www.biolegend.com
Toll-Free Phone: 1-877-Bio-Legend (246-5343) Phone: (858) 768-5800 Fax: (877) 455-9587