

GMP PE anti-human TCR α/β Antibody

Catalog# / Size	260018 / 100 tests
Clone	IP26
Other Names	α/β TCR, TCR α/β
Isotype	Mouse IgG1, κ
Description	The IP26 antibody reacts with a monomorphic determinant of the α/β T-cell receptor, which is expressed on greater than 95% of normal peripheral blood CD3 ⁺ T cells. The α/β TCR recognizes a peptide bound to MHC leading to T-cell activation.

Product Details

Reactivity	Human
Antibody Type	Monoclonal
Host Species	Mouse
Formulation	Phosphate-buffered solution, pH 7.2, containing 0.09% sodium azide, 0.2% (w/v) BSA (origin USA) and a stabilizer.
Preparation	The antibody was purified by affinity chromatography and conjugated with PE under optimal conditions.
Concentration	200 $\mu\text{g}/\text{mL}$
Storage & Handling	The antibody solution should be stored undiluted between 2°C and 8°C, and protected from prolonged exposure to light. Do not freeze.
Application	FC - Quality tested
Recommended Usage	Each lot of this antibody is quality control tested by immunofluorescent staining with flow cytometric analysis . For flow cytometric staining, the suggested use of this reagent is 5 μL per million cells in 100 μL staining volume or 5 μL per 100 μL of whole blood. It is recommended that the reagent be titrated for optimal performance for each application.
Excitation Laser	Blue Laser (488 nm) Green Laser (532 nm)/Yellow-Green Laser (561 nm)
Application Notes	Additional reported applications (for the relevant formats) include: T cell activation. When co-staining with anti-CD3, we recommend using clone UCHT1, since we have confirmed that IP26 does not compete with this clone. Other anti-CD3 clones may compete out the binding of IP26.
Application References (PubMed link indicates BioLegend citation)	<ol style="list-style-type: none">Schlossman S, et al. Eds. 1995. Leucocyte Typing V. Oxford University Press. New York. (FC)Joseph A, et al. 2008. J. Virol. 82:3078. (FC) PubMedPinto JP, et al. 2010. Immunology. 130:217. PubMed
Disclaimer	GMP RUO Flow Cytometry Antibodies. BioLegend GMP RUO fluorophore conjugated antibodies are manufactured in a dedicated GMP facility and compliant with ISO 13485:2016. For research use only. Not for use in diagnostic or therapeutic procedures. Our processes include: <ul style="list-style-type: none">• Batch-to-batch consistency• Material traceability• Documented procedures• Documented employee training• Equipment maintenance and monitoring records• Lot-specific certificates of analysis• Quality audits per ISO 13485:2016• QA review of released products

Antigen Details

Structure	Ig superfamily, with CD3 forms CD3/TCR complex
Distribution	T cells, thymocytes
Function	Antigen recognition, T cell activation
Ligand/Receptor	Peptide bound to MHC
Cell Type	T cells, Thymocytes, Tregs
Biology Area	Adaptive Immunity, Immunology
Molecular Family	TCRs
Antigen References	1. Marchalonis J, et al. 2002. J. Mol. Recognit. 15:260.
Gene ID	6955 6957

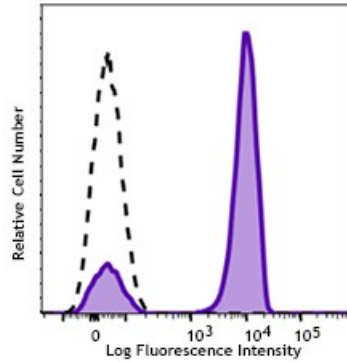
Related Protocols

[Cell Surface Flow Cytometry Staining Protocol](#)

Other Formats

Biotin anti-human TCR α/β , FITC anti-human TCR α/β , PE anti-human α/β T Cell Receptor, PE/Cyanine5 anti-human TCR α/β , Purified anti-human TCR α/β , PE/Cyanine7 anti-human TCR α/β , Alexa Fluor® 488 anti-human TCR α/β , Alexa Fluor® 647 anti-human TCR α/β , Pacific Blue™ anti-human TCR α/β , APC anti-human TCR α/β , Brilliant Violet 421™ anti-human TCR α/β , PerCP/Cyanine5.5 anti-human TCR α/β , PE/Dazzle™ 594 anti-human TCR α/β , APC/Cyanine7 anti-human TCR α/β , Alexa Fluor® 700 anti-human TCR α/β , Brilliant Violet 510™ anti-human TCR α/β , APC/Fire™ 750 anti-human TCR α/β , Brilliant Violet 605™ anti-human TCR α/β , TotalSeq™-A0224 anti-human TCR α/β , Brilliant Violet 711™ anti-human TCR α/β , Brilliant Violet 785™ anti-human TCR α/β , TotalSeq™-C0224 anti-human TCR α/β , Brilliant Violet 750™ anti-human TCR α/β , TotalSeq™-B0224 anti-human TCR α/β , PE anti-human TCR α/β , APC/Fire™ 810 anti-human TCR α/β , TotalSeq™-D0224 anti-human TCR α/β

Product Data



Typical results from human peripheral blood lymphocytes stained either with IP26 PE used at 5 μ L/test (filled histogram) or with an isotype control (open histogram).

Symbols Glossary*

Symbol	Meaning	Symbol Title	Symbol No.	Symbol	Meaning	Symbol Title	Symbol No.
	Catalog number	Catalogue number	5.1.6		Indicates the need for the user to consult the instructions for use.	Consult instructions for use	5.4.3
	Indicates the temperature limits to which the medical device can be safely exposed.	Temperature limit	5.3.7		Indicates a medical device that needs protection from light sources.	Keep away from sunlight	5.3.2
	Indicates the upper limit of temperature to which the medical device can be safely exposed.	Upper limit of temperature	5.3.6		Indicates the date after which the medical device is not to be used.	Use-by date	5.1.4
	Indicates the medical device manufacturer.	Manufacturer	5.1.1		Indicates the authorized representative in the European Community.	Authorized representative in the European Community	5.1.2
	Indicates the manufacturer's batch code so that the batch or lot can be identified.	Batch code	5.1.5		Indicates a medical device that is intended to be used as an in vitro diagnostic medical device.	<i>In vitro</i> diagnostic medical device	5.5.1

* Symbol information is from EN ISO 15223-1:2016 Medical devices – Symbols to be used with medical device labels, labelling and information to be supplied – Part 1: General requirements

For research use only. Not for resale. BioLegend will not be held responsible for patent infringement or other violations that may occur with the use of our products.

*These products may be covered by one or more Limited Use Label Licenses (see the BioLegend Catalog or our website, www.biolegend.com/ordering#license). BioLegend products may not be transferred to third parties, resold, modified for resale, or used to manufacture commercial products, reverse engineer functionally similar materials, or to provide a service to third parties without written approval of BioLegend. By use of these products you accept the terms and conditions of all applicable Limited Use Label Licenses.

BioLegend Inc., 8999 BioLegend Way, San Diego, CA 92121 www.biolegend.com
Toll-Free Phone: 1-877-Bio-Legend (246-5343) Phone: (858) 768-5800 Fax: (877) 455-9587