

## Non-Toxic for Cell Sorting – mouse CD4

11-0007-00

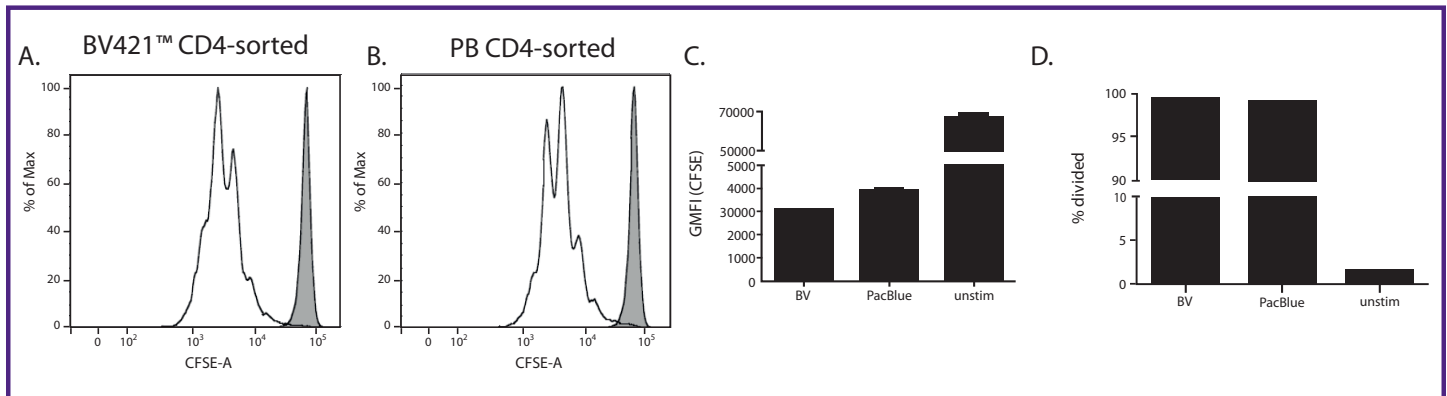
Data provided by Aras Toker and Jochen Hühn, Helmholtz Centre for Infection Research.

Toll-Free Tel: (US & Canada): 1.877.BIOLEGEND (246.5343)

Tel: 858.768.5800

[biolegend.com](http://biolegend.com)

Cat. No.	Description	Clone
100437	Brilliant Violet 421™ anti-mouse CD4	GK1.5



### Brilliant Viability

Cell viability is critical after cell sorting. Here, pooled Balb/c spleen and lymph node cells were stained with CD4-BV421™ or CD4-Pacific Blue™ and sorted for CD4 positive cells. The cells were then labeled with CFSE and stimulated in 96-well flat-bottom plates coated with anti-CD3/anti-CD28 (1 µg/ml each) at 1 x 10<sup>5</sup> cells/well. On day 4, cells were analyzed for CFSE dilution. Histograms A and B demonstrate comparable division

and expansion of cells sorted with BV421™ compared to those sorted with Pacific Blue™, as indicated by the loss of CFSE signal. Unstimulated cells are displayed as the gray histogram. Figure C shows the median fluorescence values of each group. Error bars represent the standard deviation of triplicate wells. Figure D demonstrates that the % of cells that have divided is comparable between BV421™ and Pacific Blue™-stained cells. Overall, the data shows excellent viability and responsiveness of cells after staining and sorting with a BV421™ antibody.

Pacific Blue™ is a trademark of Molecular Probes Inc.  
 Brilliant Violet 421™ and BV421™ are trademarks of Sirigen Group Ltd.

Learn more at: [biolegend.com/brilliantviolet](http://biolegend.com/brilliantviolet)

WORLD-CLASS QUALITY | SUPERIOR CUSTOMER SUPPORT | OUTSTANDING VALUE